

2014

MISSISSIPPI STATE DEPARTMENT OF HEALTH

ANNUAL REPORT

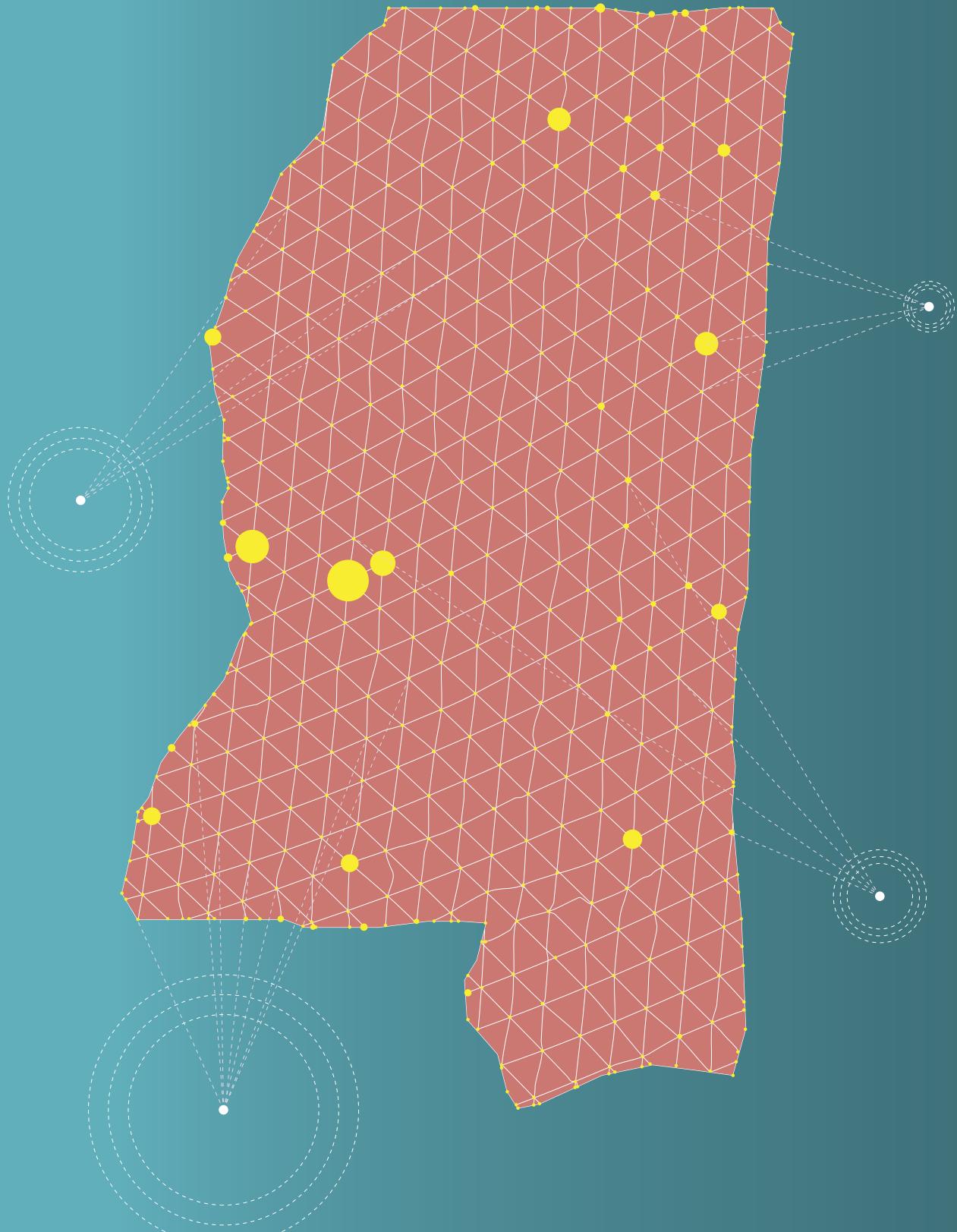
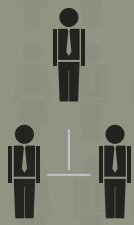
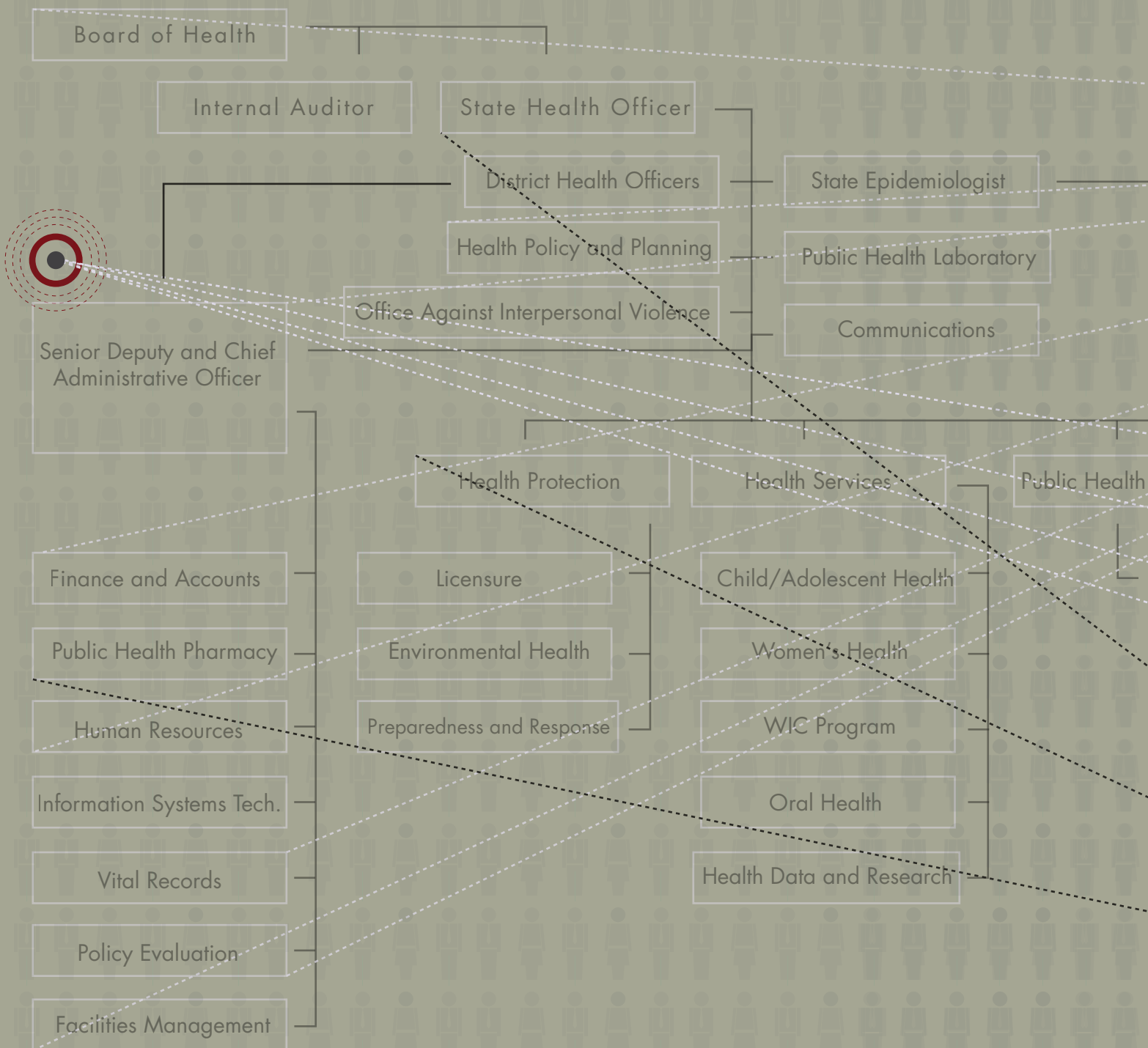


TABLE OF CONTENTS

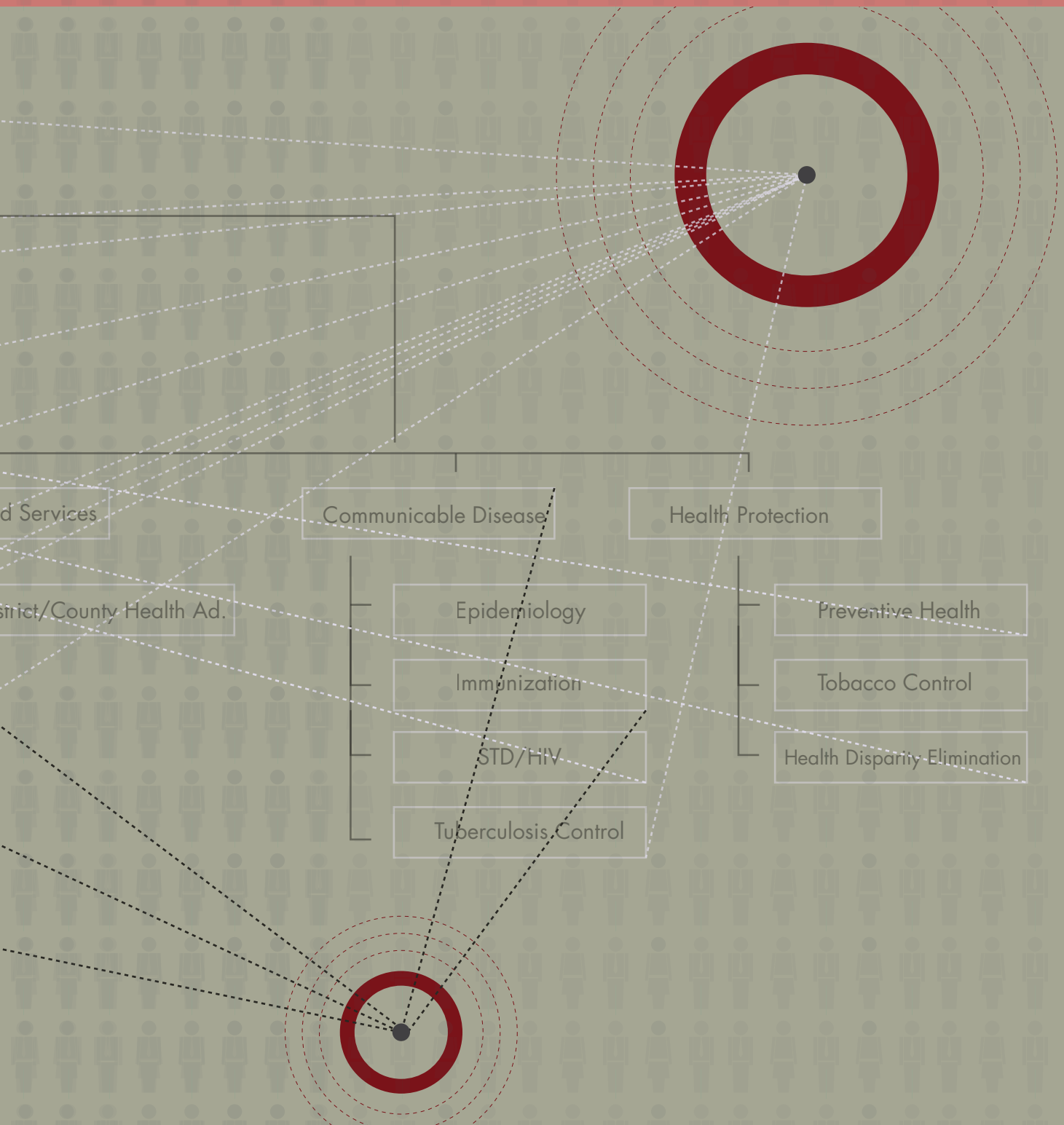
Administrative	2-11
Mississippi State Board of Health Members	4
MSDH Organizational Chart.....	5
Public Health Districts	6-7
MSDH Administration.....	8
Changes in Regulations	9-10
Changes in State Law.....	11
Public Health Indicators	12-19
Health Indicators	14
Vital Statistics.....	15
Infant Mortality	16
AIDS.....	16
Tuberculosis	17
West Nile Virus.....	17
Immunizations.....	18
Website Activity	19
Program Activities and Statistics	20-25
Fiscal Year 2014: Expenditures, Travel and Vehicle Reports	26-40
Expenditures	29-31
Travel Report	32-39
Vehicle Report.....	40



2014 Administrative Summary



ADMINISTRATIVE



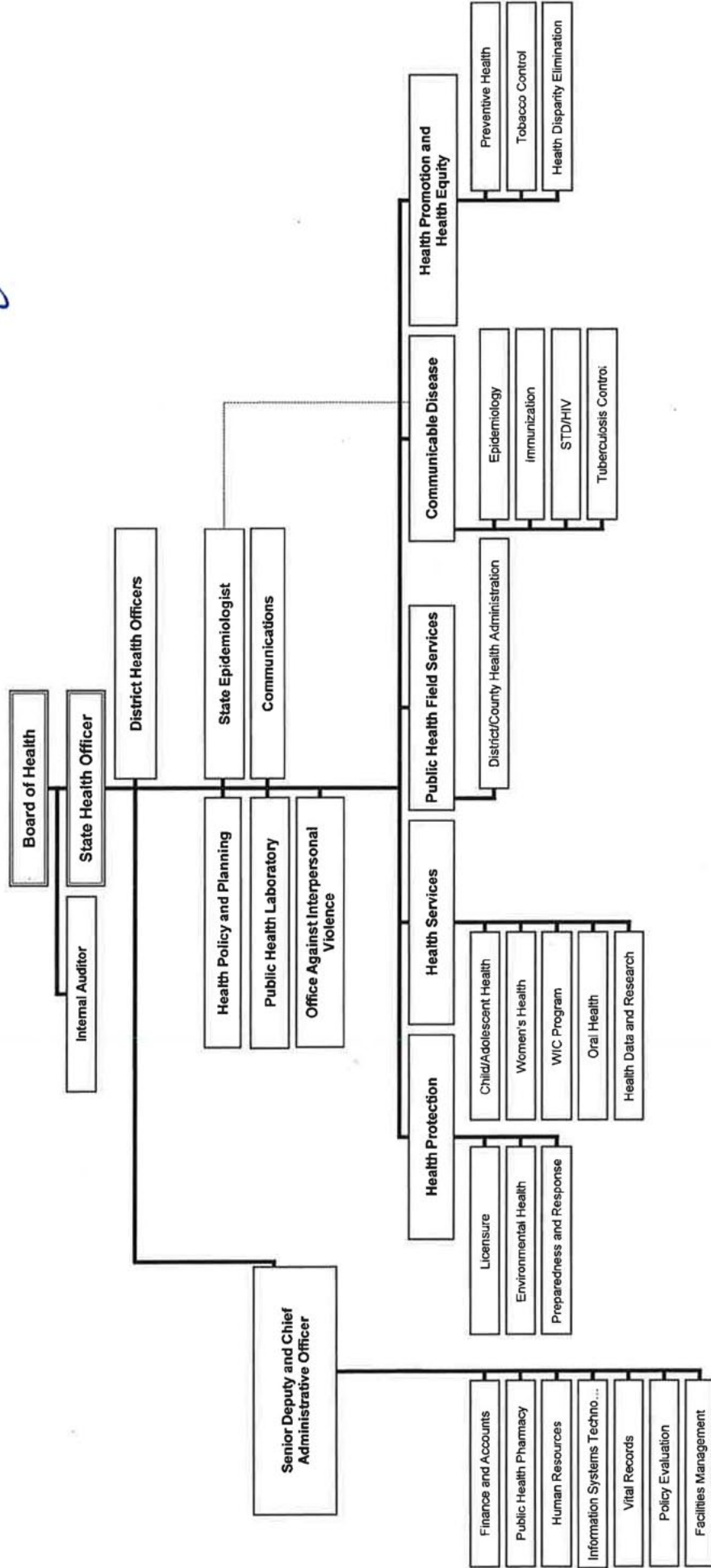
MISSISSIPPI STATE BOARD OF HEALTH

NAME	TERM EXPIRES
Elizabeth “Beth” Ashley Harkins Aldridge Madison, MS	June 30, 2019
Elayne H. Anthony, PhD Madison, MS	June 30, 2019
Ed D. “Tad” Barham, MD, FACR Clinton, MS	June 30, 2017
J. Edward “Ed” Hill, MD Tupelo, MS	June 30, 2015
Lucius “Luke” M. Lampton, MD Magnolia, MS	June 30, 2019
Edward “Ed” J. Langton Hattiesburg, MS	June 30, 2017
Robert “Bobby” J. Moody Louisville, MS	June 30, 2019
Sammie Ruth Rea, RN Brandon, MS	June 30, 2015
Wheeler Timothy “Tim” Timbs, III Indianola, MS	June 30, 2017
Thad Fulton Waites, MD Hattiesburg, MS	June 30, 2015

MISSISSIPPI STATE DEPARTMENT OF HEALTH FUNCTIONAL ORGANIZATIONAL CHART

Agency: 0301
 FY 2015
 PREPARED: JULY 1, 2014

Mary Lerner
 State Health Officer



PUBLIC HEALTH DISTRICTS

Northwest Public Health
District I
662-563-5603

Northeast Public Health
District II
662-841-9015

Delta/Hills Public Health
District III
662-453-4563

Tombigbee Public Health
District IV
662-323-7313

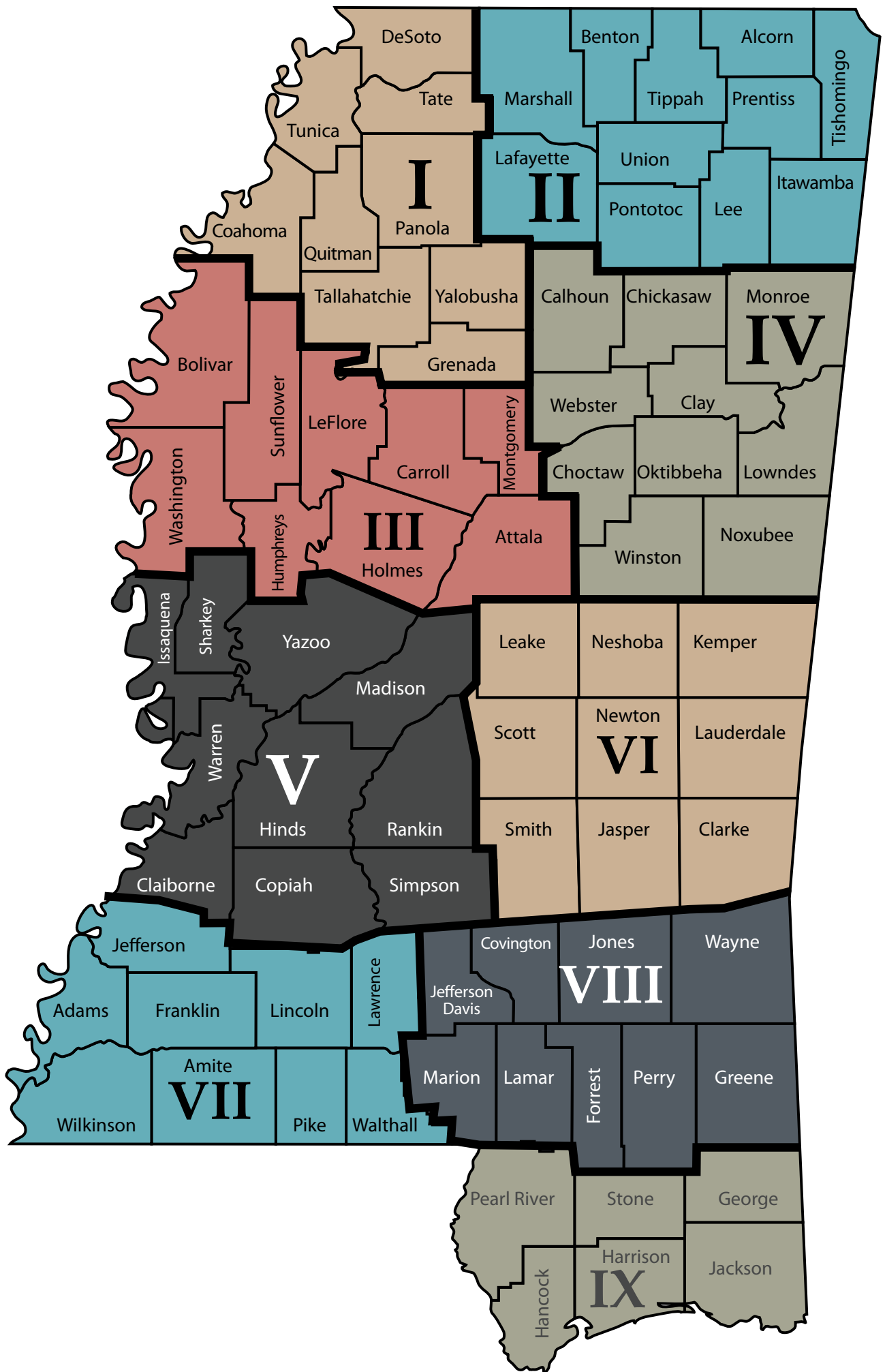
West Central Public Health
District V
601-978-7864

East Central Public Health
District VI
601-482-3171

Southwest Public Health
District VII
601-684-9411

Southeast Public Health
District VIII
601-271-6099

Coastal Plains Public Health
District IX
228-831-5151



MSDH ADMINISTRATION

State Health Officer	Mary Currier, M.D., M.P.H.	(601) 576-7634
State Epidemiologist	Thomas E. Dobbs III, M.D., M.P.H.	(601) 576-7725
Deputy State Epidemiologist	Paul Byers, M.D.	(601) 576-7725
Communicable Disease	Joy Sennett, M.H.S., Director	(601) 576-7725
Immunization	Latrina McClenton, M.S.N., M.P.H.	(601) 576-7751
Tuberculosis	Mike Holcombe, M.P.P.A.	(601) 576-7700
STD/HIV	Nicholas Mosca, D.D.S.	(601) 576-7723
Communications	Liz Sharlot	(601) 576-7667
Health Policy and Planning	Don Eicher, J.D.	(601) 576-7874
Legal Counsel	Bob Fagan, J.D.	(601) 576-7847
Internal Audit	Breanne Hancock, C.P.A.	(601) 576-7449
Health Promotion & Health Equity	Evelyn Walker, M.D., M.P.H., Director	(601) 206-1540
Health Disparity Elimination	Tanya Funchess, D.H.A., M.P.H., M.S.M.	(601) 206-1540
Preventive Health	Victor Sutton, Ph.D, M.P.P.A.	(601) 206-1559
Office of Tobacco Control	Roy Hart, M.P.H.	(601) 991-6050
District Health Officers & Deputies		
District I & III	Alfio Rausa, M.D.	(662) 453-4563
	Nathaniel Brown, M.D. (Deputy)	(662) 563-5603
District II	Crystal L. Tate, M.D.	(662) 841-9015
District IV	Robert H. Curry, M.D.	(662) 323-7313
District V	Rebecca James, M.D.	(601) 978-7864
District VI	Rebecca James, M.D.	(601) 482-3171
District VII	Leslie England, M.D.	(601) 684-9411
District VIII	Thomas E. Dobbs III, M.D., M.P.H. (Acting)	(601) 271-0699
	Quenyatta Echols-Williams, M.D. (Deputy)	(601) 271-0699
District IX	Paul Byers, M.D. (Acting)	(228) 436-6770
	D'Ette Lorio, M.D. (Deputy)	(228) 436-6770
Field Services		
District Health Administrators	Tim Darnell, M.S.	(601) 576-7951
District I	Diane W. Hargrove, M.R.P.	(662) 563-5603
District II	Roger Riley, M.S.	(662) 841-9015
District III	Diane W. Hargrove, M.R.P.	(662) 453-4563
District IV	Karen McPherson	(662) 323-7313
District V	Kevin Pearson, M.P.P.A.	(601) 978-7864
District VI	Kathy Posey, R.N.	(601) 482-3171
District VII	Tracy Byas, M.H.S.	(601) 684-9411
District VIII	Chad Bridges	(601) 271-0699
District IX	David Caulfield	(228) 436-6770
Chief Administrative Officer	Mitchell Adcock, C.P.A., C.I.A., C.F.E., C.P.M.	(601) 576-7635
Health Administration		
Finance & Accounts	Sharon Nasianceno, M.Accy., CPA	(601) 576-7359
Facilities & Property Management	Vacant	(601) 576-7635
Human Resources	Ronald P. Davis, M.B.A	(601) 576-7642
Information Technology	Kevin Gray	(601) 576-8092
Public Health Pharmacy	Meg Pearson, Pharm.D.	(601) 713-3457
Policy Evaluation	Kathy Moon, M.P.P.A.	(601) 576-7428
Vital Records	Judy Moulder, M.H.S.	(601) 206-8266
Public Health Laboratory Director	Daphne Ware, Ph.D, M.S.	(601) 576-7582
Health Protection		
Emergency Planning & Response	Jim Craig, C.P.M., Director	(601) 576-7680
Emergency Medical Services/Trauma Services	Wayne Vaughn	(601) 576-7680
Environmental Services	Alisa Williams	(601) 576-7380
Licensure	Leslie Royals, M.S., P.E., B.C.E.E.	(601) 576-7690
	Vickey Berryman, R.N.	(601) 364-1100
Interpersonal Violence	Heather Wagner, J.D., Director	(601) 576-7847
Health Services		
Child & Adolescent Health	Kathy Burk, L.C.S.W., C.P.M., Director	(601) 576-7472
Child & Adolescent Health	Beryl Polk, Ph.D, C.P.M.	(601) 576-7464
Health Data & Research	Leigh Campbell, M.D., (Medical Director)	(601) 576-7464
State Dental Director	Lei Zhang, Ph.D, M.B.A., M.S.	(601) 576-8165
WIC	Dionne Richardson, D.D.S., M.P.H.	(601) 576-7500
Women's Health	Elvie Guthrie-Lewis, M.A., R.D.	(601) 991-6000
	Louisa Denson, M.P.P.A., L.C.S.W.	(601) 576-7856

CHANGES IN REGULATION—FY 2014

The following final regulatory actions were taken by the Mississippi State Board of Health in FY 2014:

JULY 13, 2013

Final Adoption of the Regulations Governing the Licensure of Child Care Facilities.

- This change clarifies maximum capacity.
- Various changes made for Directors and Director Designee requirements, training and qualifications.
- All facilities are now “smoke-free.”
- Defines how “serious occurrences” are to be reported.
- Addresses “safe sleep environment” to reduce SIDS risk.
- Various changes to improve health and safety, such as required distance from various hazards on playground; pest control; use of soap, paper towels; food prep areas; car seats; and other safety and health matters.
- Clarifies what is a Class I violation.
- Clarifies requirements for Letters of Suitability following background checks.
- Changes and clarifications regarding how rule violations are cited.

Final Adoption of changes made to the Regulations Governing the Registration of Medical Radiation Technologists.

- Amended definitions to add a definition for Limited X-Ray Machine Operator, and operators are permitted and regulated by the State Board of Medical Licensure.
- Changes made to reflect statutory changes made during the 2013 Legislative Session—reduced the size of the MRT Advisory Council by one (1) member.
- Regulations changed to reflect that ID cards are no longer issued, but instead an ID letter.

Final Adoption of changes made to Regulations Governing Emergency Medical Services.

- Clarified eligible use of Emergency Medical Services Operation Fund monies in personnel expenses category, training expenses category, commodity expenses category and equipment expenses category.
- Changes made to reflect that EMSOP monies used to purchase motorized vehicles must meet permitting requirements of the department and be permitted by the Department.

Final Adoption of changes made to the Rules and Regulations Governing the Bureau of Public Water Supply.

- The definition of public water supply was amended.

Final Adoption of changes made to the Rules and Regulations Governing Mississippi On-Site Wastewater Disposal Systems.

- Chapter 1 of Part 18, Subpart 77—titled “Administrative”—was repealed and replaced.

Final Adoption of the Appalachian Regional Commission “ARC” J-1 Visa Waiver Guidelines.

- Clarified the employment contract requirements in Rules 1.3.8 of the Rules of the J-1 Program.

Final Adoption of the Mississippi Conrad State 30 J-1 Visa Waiver Guidelines.

- Clarified the employment contract requirements in Rule 1.3.8 of the Rules of the J-1 Program.

Final Adoption of the Mississippi Qualified Health Center (MQHC) Grant Program—Policies and Procedures Manual

- Changed the requirement that on-site monitoring or audit process be of every grantee from every year to one-half each year and revise requirements of in office monitoring.

Final Adoption of the Minimum Standards of Operation for Mississippi Hospitals.

- Changed to allow for the operation of a Pilot Freestanding Emergency Department.

Final Adoption of the FY 2014 Mississippi State Health Plan.

- Changed to allow for the establishment or addition of programs for the exclusive treatment of post-traumatic stress disorder.
- Changed to update levels of perinatal care.
- Changed to lower the annual minimum utilization for establishment of satellite ESRD facilities.

OCTOBER 9, 2013

Final Adoption of Regulations Governing Emergency Medical Services.

- Added new level of care, Critical Care Paramedic, including training requirements, certification process, grounds for discipline, etc.

Final Adoption of the Trauma Care System Regulations.

CHANGES IN REGULATION—FY 2014

- The Trauma Care Region map was updated.
- Changed to add Pre-Hospital Air Medical Utilization Guidelines as a companion document to the Consolidated Trauma Activation Criteria and Guidelines.

Final Adoption of the Minimum Standards of Operation of Pediatric Skilled Nursing Facilities.

- Created Title 15, Part 16, Subpart 1, Chapter 3—the Minimum Standards of Operation of Pediatric Skilled Nursing Facilities.

Final Adoption of the Minimum Standards of Operation for Intermediate Care Facilities for Individuals with Intellectual Disabilities (ICFs-IID).

- Created Title 15, Part 16, Subpart 1, Chapter 49—the Minimum Standards of Operation for Intermediate Care Facilities for Individuals with Intellectual Disabilities (ICF-IID).

Final Adoption of the Mississippi State Board of Cosmetology Sanitation Rules and Regulations.

- Language added to acknowledge the designation of Master Manicurist and Master Esthetician.
- Changes were made to the requirements for the interior of establishments—including cleanliness requirements, the allowance for registered animal service dogs, requirements for drinking water and requirements for restrooms.
- Change was made to allow antibacterial hand sanitizer to be used prior to providing service.
- Changes were made to the type of instrument and supplies that may be used.
- A rule was added to address Microdermabrasion.
- A rule was added to require the discarding of wet disinfectant when it becomes contaminated.
- The rule prohibiting waxing services on legs and feet prior to pedicure services was deleted.
- A rule was clarified to completely prohibit the removal of moles or blemishes.
- A rule was changed to require that all creams, lotions and other cosmetics must be labeled.
- Rewording and formatting changes were made to provide clarity.

Final Adoption of the Stroke System of Care Plan.

- Changes made to replace the term “stroke specialist” with “practitioner trained in stroke care.”
- Changes made to remove requirement for Level 4 (non-stroke) Hospital to have a physician director of the stroke program.
- Changed “transport to appropriate level of care” to “transport to the nearest hospital with an appropriate level of stroke care.”
- Changed “within four and a half (4.5) hours of onset” to “within three (3) hours of onset.” Added “Select patients may be considered for thrombolytics within four and a half (4.5) hours of symptom onset based on AHA and AAN practice statement.”
- Changed CT results from 25 minutes to 45 minutes after test completion.
- Changed transport protocol from “closest hospital capable of diagnosing the patient’s condition” to “closest hospital capable of treating the patient with IV Alteplase (Stroke Capable, or Primary/Comprehensive Stroke Center. Added “Hospitals not able to diagnose and treat stroke patients (Level 4 hospitals) may be bypassed.”

JANUARY 8, 2014

Final Adoption of Rules and Regulations Governing Reportable Diseases and Conditions.

- Changes made to allow for monitoring of Hospital Acquired Infections.

APRIL 9, 2014

The Board took no regulatory action during the April 9, 2014 meeting.

CHANGES IN STATE LAW

Legislative Update for the 2014 Mississippi Legislative Session:

SENATE BILL 2015. Signed 3/15/14. Effective 7/1/14.

- Extends the repealer on Sections § 41-3-1.1 through 6 and § 41-3-15 through 19, Mississippi Code of 1972, on the legislation reauthorizing the Mississippi State Department of Health and the Board of Health to 2017. This legislation extends the repealer on certain CON application fees and extends the repealer on Section § 43-11-13(4), Mississippi Code of 1972, Personal Care Home Regulations to 2017. In addition, there is a Diabetes and Obesity Annual Health Action Plan included.

HOUSE BILL 1231. Signed 4/17/14. Sections 1 & 3 effective on and after passage; rest of bill 7/1/14.

- Adds Hallucinogenic substances to Schedule I and the drug Lorcaserin to Schedule IV of the Mississippi Uniform Controlled Substances Act. This legislation also allows the restricted use of cannabidiol (CBD) in certain circumstances.

HOUSE BILL 48. Signed 1/30/14. Effective 7/1/14.

- Creates the “Mississippi Youth Concussion Law” which provides definitions and policy requirements pertaining to youth athletes returning to play after sustaining a concussion or head injury. The Mississippi State Department of Health has provided a page on the website linked to an educational course from the Centers for Disease Control (CDC).

HOUSE BILL 28. Signed 1/30/14. Effective 7/1/14.

- Extends the repealer on Section § 41-99-5, Mississippi Code of 1972, which allows the Mississippi State Department of Health to make grants under the Mississippi Health Center Grant Program.

HOUSE BILL 392. Signed 3/31/14. Effective 7/1/14.

- Extends the repealer on Section § 41-119-21, Mississippi Code of 1972, of the Health Information Technology Act (MS-HIN). This legislation also amends Section § 41-119-19, Mississippi Code of 1972, to direct the PEER Committee to develop a report regarding the implementation of the electronic health records system in Mississippi.

HOUSE BILL 1030. Signed 4/23/14. Section 1 & 9 effective on and after passage; rest of bill 7/1/14.

- Creates the Office of Interpersonal Violence within the Mississippi State Department of Health.

HOUSE BILL 1328. Signed 4/23/14. Effective 7/1/14.

- Creates the Small Business and Grocer Investment Act that provides grants and loans, if monies are available from the Mississippi Development Authority, and/or promotes access to healthy food retailers that increase access to fresh fruit and vegetables and other affordable healthy food in underserved communities.

HOUSE BILL 1275. Signed 4/15/14. Effective 7/1/14.

- Extends the repealer on the Medicaid technical amendments legislation and amends certain sections. This legislation includes language surrounding Perinatal High Risk Management/ Infant Services System (PHRM/ISS), which keeps the program contracted with the Mississippi State Department of Health.

SENATE BILL 2408. Signed 3/17/14. Effective 7/1/14.

- Amends Section § 41-7-173, Mississippi Code of 1972, to define “radiation therapy services” and exempt a certain kind from the Certificate of Need law.

SENATE BILL 2591. Signed 3/31/14. Effective 7/1/14.

- Creates the “Umbilical Cord Blood Banking Program” to be administered by the Mississippi State Department of Health in order to provide awareness concerning blood banking.

HIV REPORTED CASES

PUBLIC HEALTH INDICATORS

INFANT MORTALITY RATE

TUBERCULOSIS RATES

VACCIN

OBESITY PREVALENCE RATE DOWN

TEEN PREGNANCY

OBESITY PREVALENCE

CARDIOVASCULAR DISEASE MORTALITY RATE

E COVERAGE

**STATUS OF SELECTED HEALTH INDICATORS
FOR MISSISSIPPI, 2004-2013**

Year	Infant Mortality Rate ¹	Cardiovascular Disease Mortality Rate ²	Teen Pregnancy Rate ³
2004	9.7	284.1	36.4
2005	11.4	293.9	35.5
2006	10.5	276.3	41.0
2007	10.1	274.8	43.0
2008	9.9	271.2	40.6
2009	10.0	253.6	39.0
2010	9.6	254.5	33.4
2011	9.4	245.9	30.1
2012	8.8	242.8	27.4
2013	9.7	258.1	25.2
U.S. Rate (year)	6.1 (2011)	173.7 (2011)	Not Available
MS Rank ⁴	50	50	

¹ Infant deaths per 1,000 live births

² Deaths per 100,000 population

³ Births + fetal deaths + abortions per 1,000 females 10-19

⁴ Rank: 1=best/50=worst

Source: Mississippi State Department of Health, Office of Public Health Statistics, Vital Statistics

**STATUS OF SELECTED PREVALENCE INDICATORS
FOR MISSISSIPPI, 2004-2013**

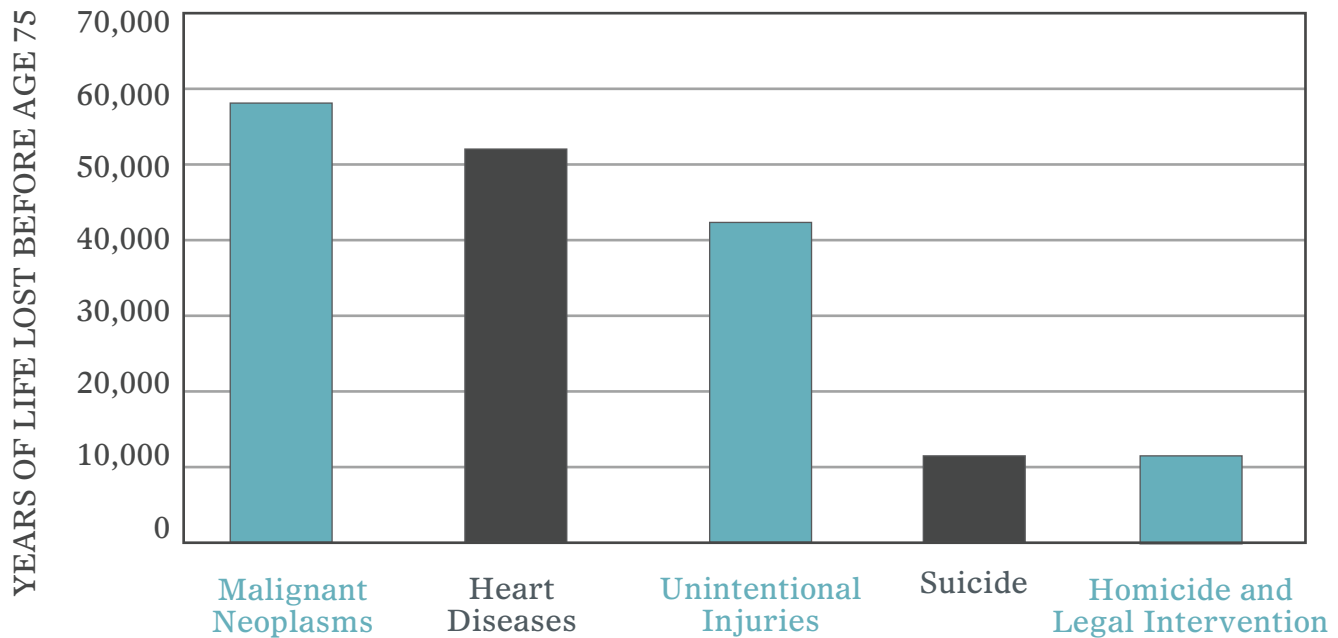
Year	Obesity Prevalence Rate ¹	Diabetes Prevalence Rate ¹	Current Smoking Prevalence Rate ¹
2004	29.5	9.6	24.6
2005	30.9	9.7	23.7
2006	31.5	10.9	25.1
2007	32.6	11.1	23.9
2008	33.4	11.3	22.7
2009	35.4	11.6	23.3
2010	34.5	12.4	22.9
2011	34.9	12.4	26.0
2012	34.6	12.5	24.0
2013	35.2	12.9	24.9
U.S. Rate (year)	29.4 (2013)	9.7 (2013)	19.0 (2013)
MS Rank ²	50	48	47

¹ Percent

² Rank: 1=best/50=worst

Source: Mississippi State Department of Health, Office of Public Health Statistics, Behavioral Risk Factor Surveillance System.

**LEADING CAUSES OF YEARS OF POTENTIAL LIFE LOST
BEFORE AGE 75, MISSISSIPPI RESIDENTS, 2013**



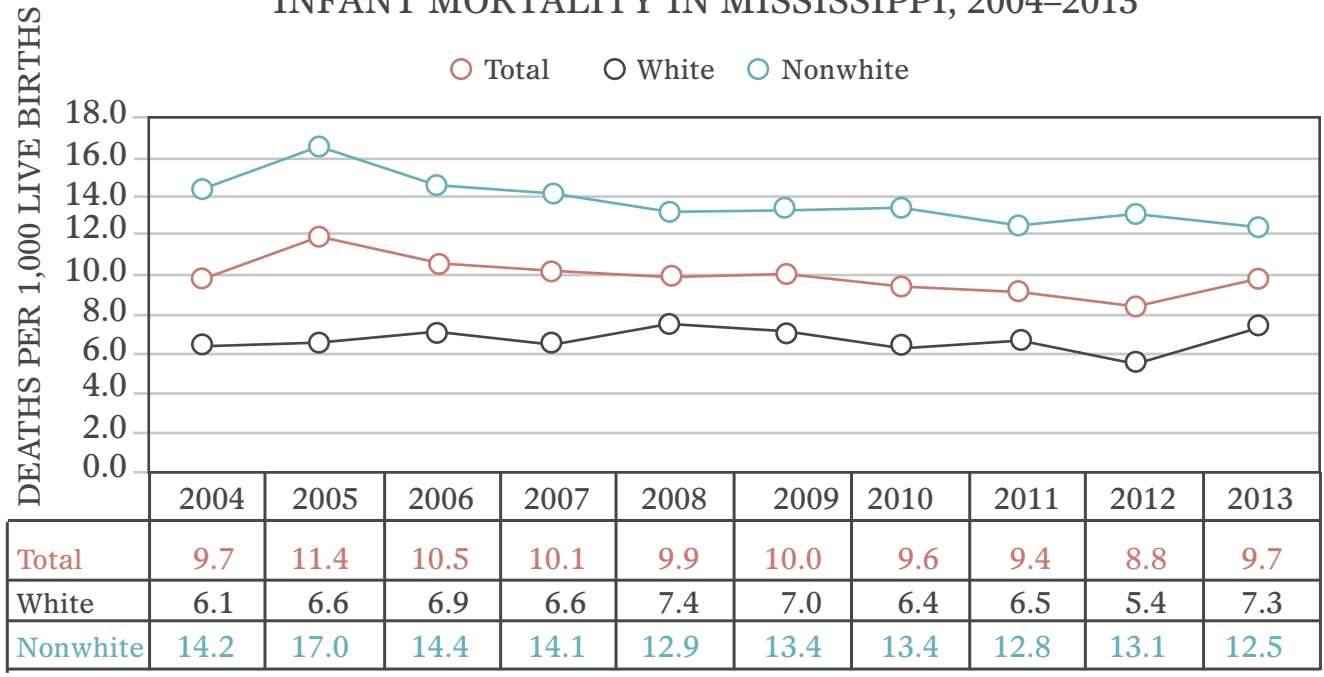
Source: Mississippi State Department of Health, Office of Public Health Statistics, Vital Statistics

**LEADING CAUSES OF YEARS OF POTENTIAL LIFE LOST
BEFORE AGE 75, MISSISSIPPI RESIDENTS, 2004-2013**

Year	Malignant Neoplasms	Heart Diseases	Unintentional Injuries	Suicide	Homicide and Legal Intervention
2004	53,248	51,654	51,173	10,728	11,515
2005	53,876	54,376	55,156	11,550	9,514
2006	54,377	51,681	56,122	9,278	12,328
2007	52,427	52,930	55,342	11,721	11,400
2008	54,315	50,478	47,571	11,568	13,293
2009	52,071	48,098	47,324	10,724	10,358
2010	52,808	50,381	44,098	11,004	11,071
2011	55,702	48,878	44,945	10,835	12,356
2012	56,111	48,588	42,766	11,612	11,618
2013	58,142	52,513	42,642	11,332	11,429

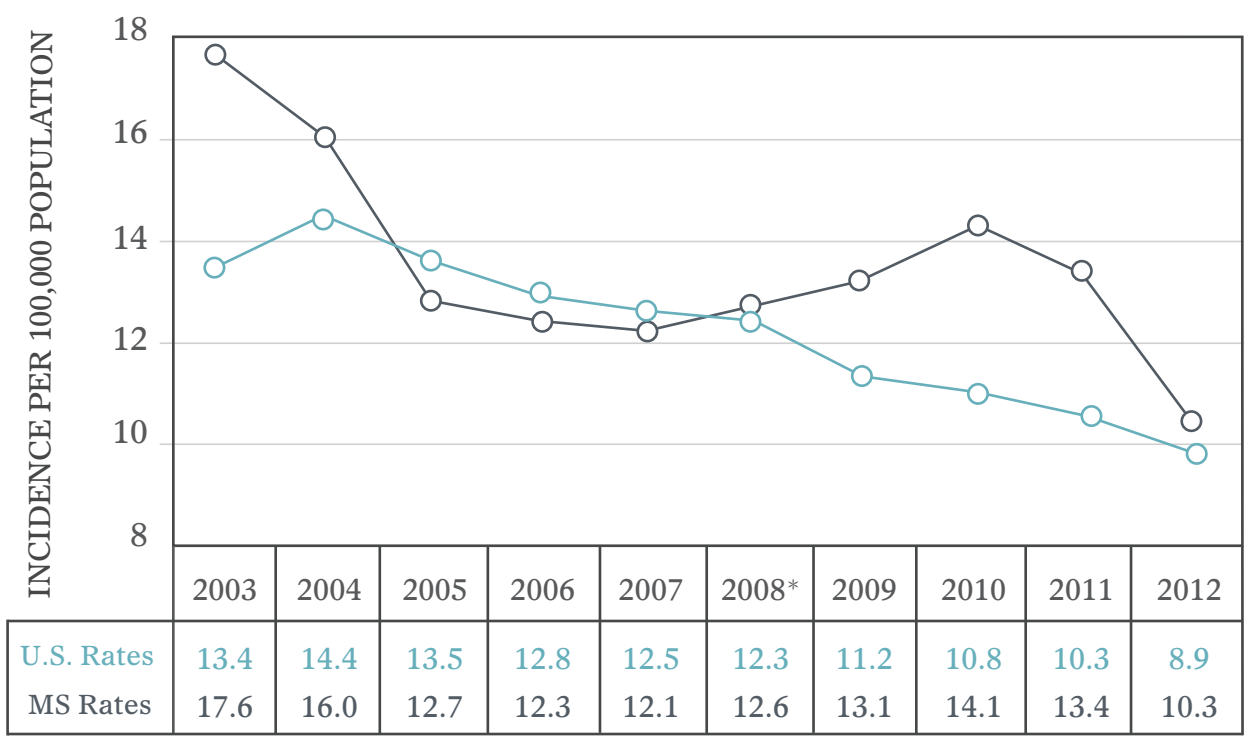
Source: Mississippi State Department of Health, Office of Public Health Statistics, Vital Statistics

INFANT MORTALITY IN MISSISSIPPI, 2004–2013



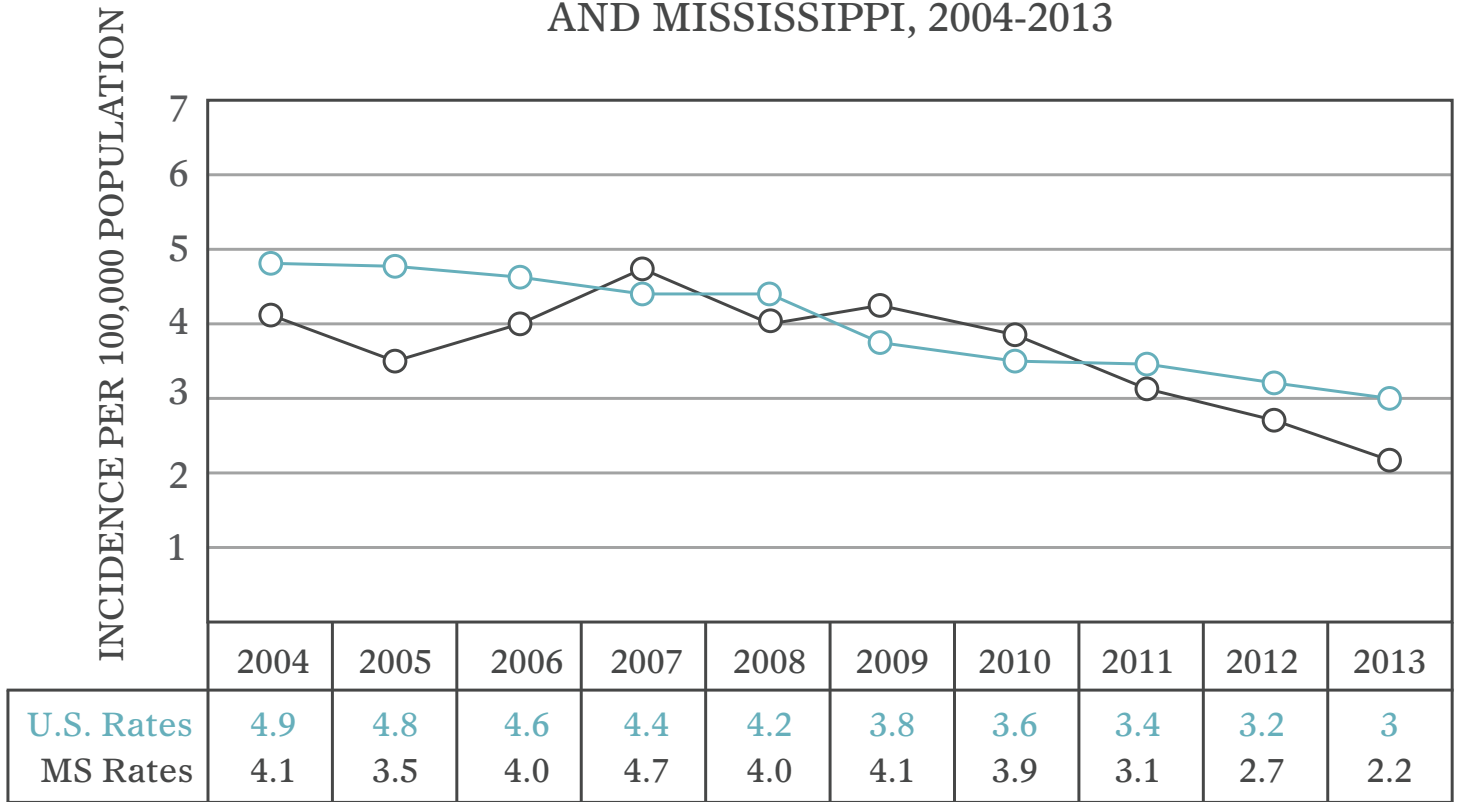
Infant Mortality Rate, Mississippi 2013:
 Total 9.7 (up)
White 7.3 (up)
Nonwhite 12.5 (down)

AIDS RATES BY YEAR, UNITED STATES AND MISSISSIPPI, 2003–2012

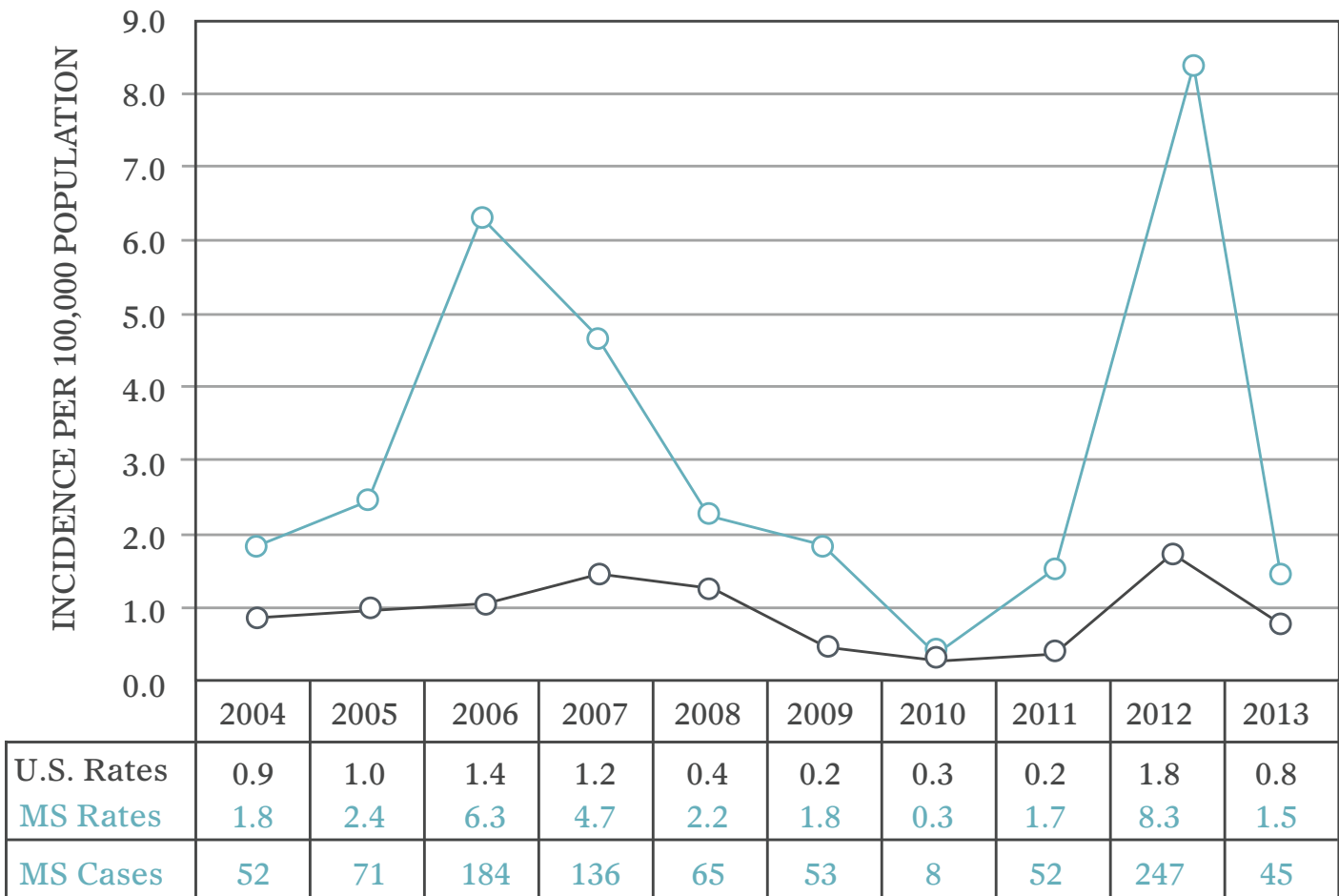


**As of 2008, cases are no longer counted by year of report, but by year of AIDS diagnosis.*

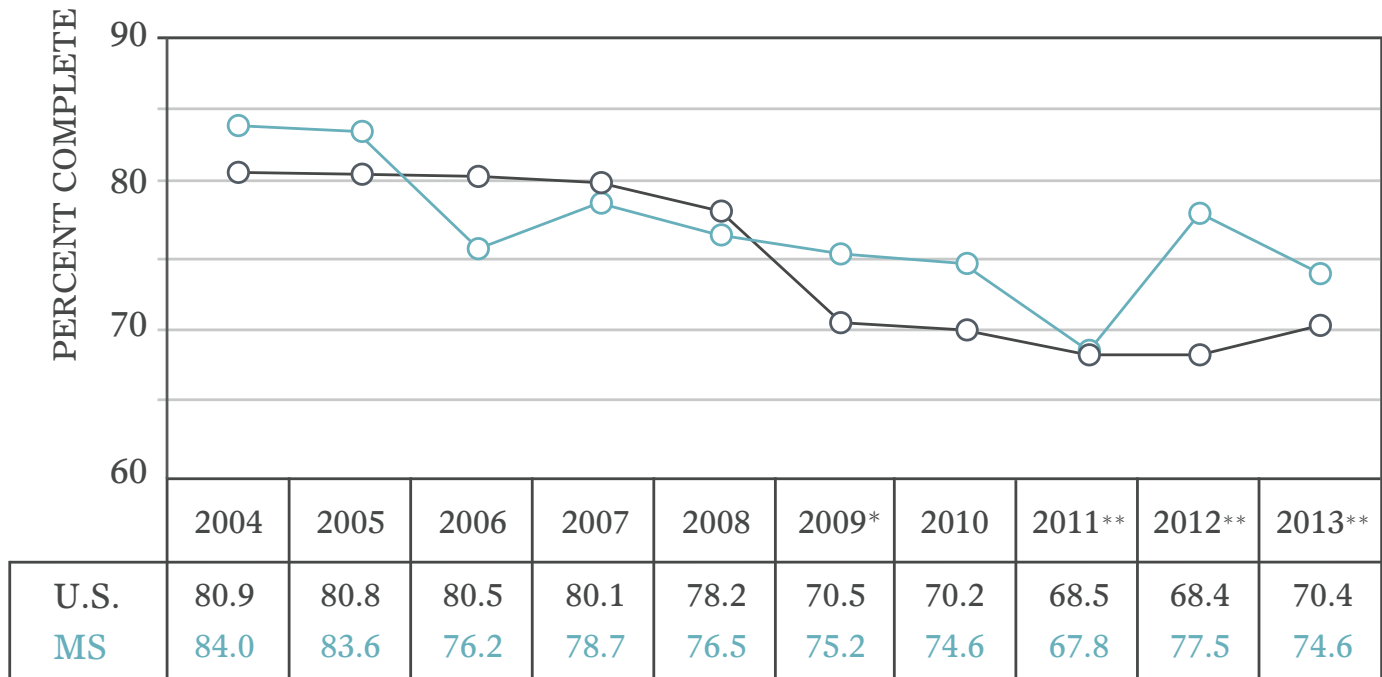
TUBERCULOSIS RATES BY YEAR, UNITED STATES AND MISSISSIPPI, 2004-2013



WEST NILE VIRUS RATES BY YEAR, UNITED STATES AND MISSISSIPPI, 2004-2013

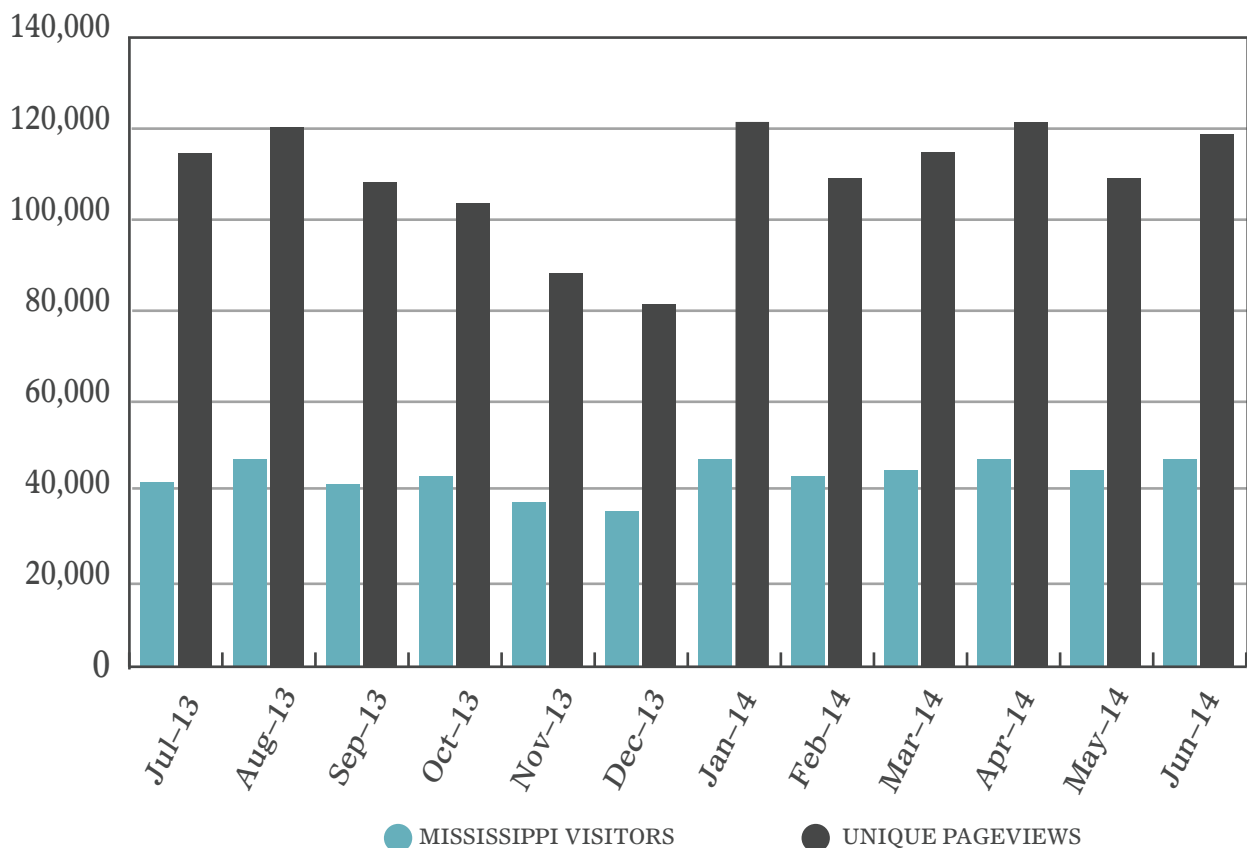


VACCINATION COVERAGE AMONG CHILDREN 19-35 MONTHS, BY YEAR, MISSISSIPPI AND UNITED STATES



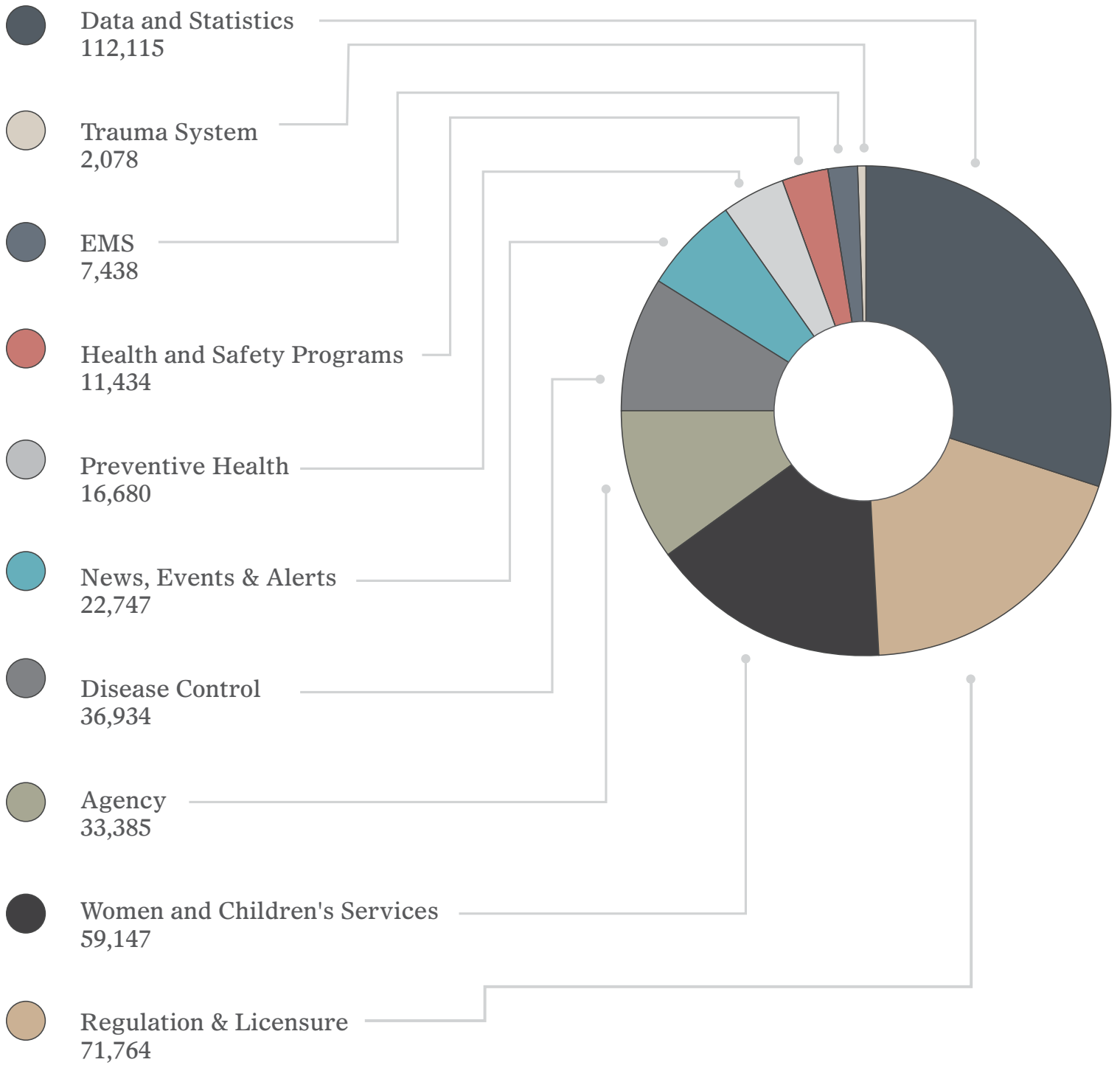
CDC - National Immunization Survey
 4:3:1:3:3 (4 DTaP, 3 IPV, 1 MMR, 3 Hib, 3 HepB) for 2001-2008
 4:3:1:0:3:1:4 (4 DTaP, 3 IPV, 1 MMR, 0 Hib, 3 HepB, 1 Var, 4 PCV) for 2009
 *Hib vaccine excluded due to shortage
 4:3:1:3:3:1:4 (4 DTaP, 3 IPV, 1 MMR, 3 Hib, 3 HepB, 1 Var, 4 PCV) for 2010
 4:3:1:3:3:1:4 (4 DTaP, 3 IPV, 1 MMR, 3 Hib, 3 HepB, 1 Var, 4 PCV) for 2011-2013
 **Full Series (FS) for Hib reported

WEBSITE: VISITORS



517,753 Mississippians visited the MSDH web site in FY 2014, viewing 1,313,149 pages, and averaging about 10,000 visits a week.

WEBSITE CATAGORIES OF INTEREST 2014



2,001

PROGRAM ACTIVITIES AND STATISTICS

3,734



WEB PAGE VISITS

15,010



HEALTH PROTECTION

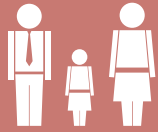
37,613

578

INTERNET COVERAGE GENERATED

547

WOMEN'S HEALTH



FAMILY PLANNING

72

MSDH PROGRAM ACTIVITIES AND STATISTICS

Clients, Facilities, Certificates and Inspections, Fiscal Year 2014 Report of Activities by Program

COMMUNICABLE DISEASES

Immunization doses administered*	272,673
HIV cases identified**	556

*Does not include VFC Provider immunizations

**HIV cases are for calendar year 2013

HEALTH SERVICES

Child Health

Children (ages birth-21) encounters	23,628
Newborns screened for phenylketonuria, hypothyroidism, galactosemia, hemoglobinopathies, congenital adrenal hyperplasia and other genetic disorders	37,956

Children's Medical Program

Specialty/Clinic sessions per year	128
Patients enrolled in program	2,359

WIC – Special Supplemental Nutrition Program for Women, Infants and Children (Average monthly participation)

Women	19,982
Infants	25,839
Children	40,738

Women's Health

Pregnant women served	4,815
High-risk mothers and infants served through Perinatal High Risk Management/Infants Services System (PHRM/ISS) unduplicated	3,740
Women screened for breast or cervical cancer (as of 6/30/13)	6,518

Reproductive Health (Family Planning)

Adult patients served	41,364
Teens	14,112

Oral Health

Population added through water fluoridation program	21,914
Population on recruited systems (pending activation)	33,514
Second-grade children served through dental sealant program	509

Preventive Health

Child safety car seats distributed and installed	2,000
--	-------

Tobacco Control

Number of counties with Tobacco-Free Coalitions implementing evidence-based programs consistent with CDC best practices guidelines	82
Number of unduplicated individuals who contacted Office of Tobacco Control (OTC)-funded tobacco cessation treatment programs	25,608
Number of unduplicated individuals who have completed the intake process for OTC-funded tobacco cessation treatment programs	6,130

HEALTH PROTECTION

Environmental Health

Boilers and Pressure vessels inspected (including inspections done by insurance representatives, which are assured by MSDH)	17,896
Food establishments permitted	13,955
Inspections of food establishments	29,264
Wastewater complaints investigated	1,035
Water system inspections	1,074
Sewage disposal inspections and soil/site evaluations	7,837
Dairy farm inspections	372
Dairy samples collected for evaluation	1,626
Jail inspections performed	316

Radiological Health and Safety

Radioactive materials licenses inspected	135
Healing Arts X-ray tubes inspected	2,475
Mammography units inspected	113
Environmental samples collected and analyzed for radioactivity around the Grand Gulf Nuclear Station and Salmon Test	773

Emergency Medical Services/Trauma

Ambulance services licensed	211
Ambulances permitted	765
Certifications/Recertifications Issued	
EMT Paramedics	1,141
EMT Basics	1,227
EMS Drivers	340
Emergency services licensed/relicensed	211
Designated trauma centers	85

Licensure

Hospitals—accredited (licensed)	67
Hospitals—non-accredited (licensed)	47
Nursing Homes/Skilled Nursing facilities (licensed and certified)	210
Home health agencies (licensed)	46
Intermediate care facilities for the mentally challenged (licensed)	16
Psychiatric Residential Treatment Facilities (licensed)	7
Personal Care Homes (licensed)	188
Hospices (licensed) (includes branches/satellites)	160
Ambulatory surgical facilities (licensed) (includes single specialty)	69
Community mental health centers (certified only)	10
Rural health clinics (certified only)	166
End stage renal disease facilities (certified only)	77
Comprehensive outpatient rehabilitation facilities (certified only)	5
Portable x-ray (certified only)	7
Outpatient physical therapy facilities (certified only)	25
Abortion facilities (licensed)	1
CLIA laboratories (excluding VA labs) (certified only)	2,733
Utilization Review Agents	125
Health facilities surveyed	953
Health facility complaints investigated	900
Number of inspections of youth camps	84
Child residential care homes monitored per Notification Act X	12
Number of general/renewal inspections of daycare facilities	3,399
Daycare complaints investigated	586
Licenses issued for athletic trainers, audiologists, dietitians, hearing aid specialists, occupational therapists and occupational therapy assistants, respiratory care practitioners, speech-language pathologists and professional art therapists	6,671
Total number of registered or certified radiation technologists, audiology aides, eye enucleators, speech language pathology aides, tattoo artists, body piercers and hair braiders	6,054

OFFICE OF HEALTH POLICY AND PLANNING

Planning and Resource Development

Certificate of Need (CON) applications reviewed	19
Declaratory rulings issued	64
Capital expenditures authorized through issued CONs and declaratory rulings	\$153,031,218

Rural Health

Number of technical assistance/information requests processed	157
Number of critical access hospitals assisted	24
Health Professional Shortage Area designation ratio reviews conducted:	
Primary care	82
Dental	82
Mental health (by catchment area)	15
Health Professional Shortage Areas designations approved	460
J-1 physicians placed	4
Patients served through Mississippi Qualified Health Center grant program (FY2013)	91,960

COMMUNICATIONS*

News releases produced	105
Web page visits	517,753
Total number of media inquiries	431
Requests for public records (submittals and responses)	389
Agency forms created and revised	191
Original artwork designed and printed (public health campaigns)	395
Major news coverage	1,762
Television coverage generated	363
Newspaper coverage generated	969
Internet coverage generated	430

*The Office of Communications does many public health campaigns generated through MSDH program areas, and this outreach is not reflected in the above figures.

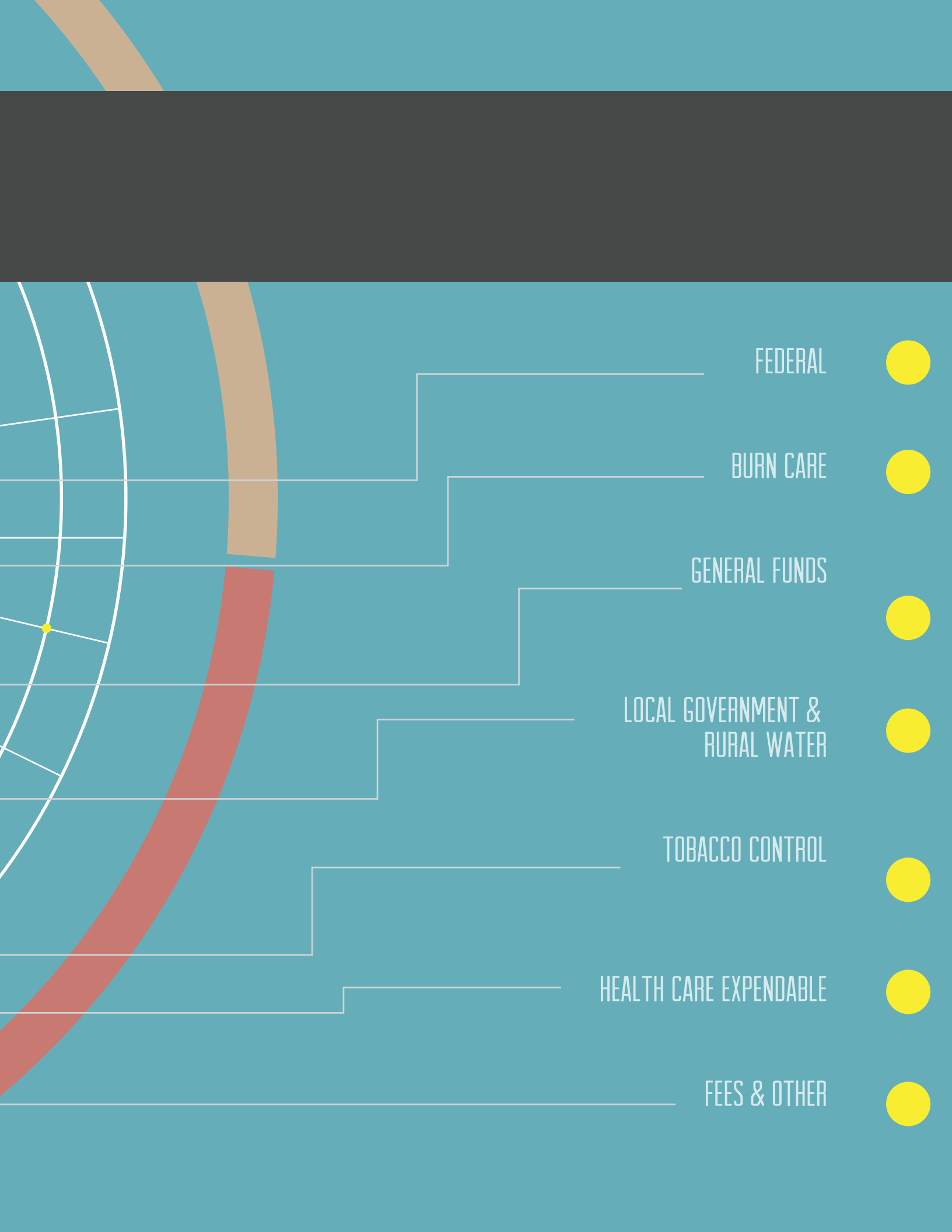
VITAL STATISTICS*

Calendar Year 2013

Births	37,649
Deaths	29,887
Marriages	20,371
Divorces	10,853
Fetal deaths	356
Induced terminations	2,170
Adoptions	1,279
Certified copies of vital records issued	427,889
Answered calls to the Office of Health Statistics	104,780

FISCAL YEAR 2014:





FEDERAL



BURN CARE



GENERAL FUNDS



LOCAL GOVERNMENT &
RURAL WATER



TOBACCO CONTROL



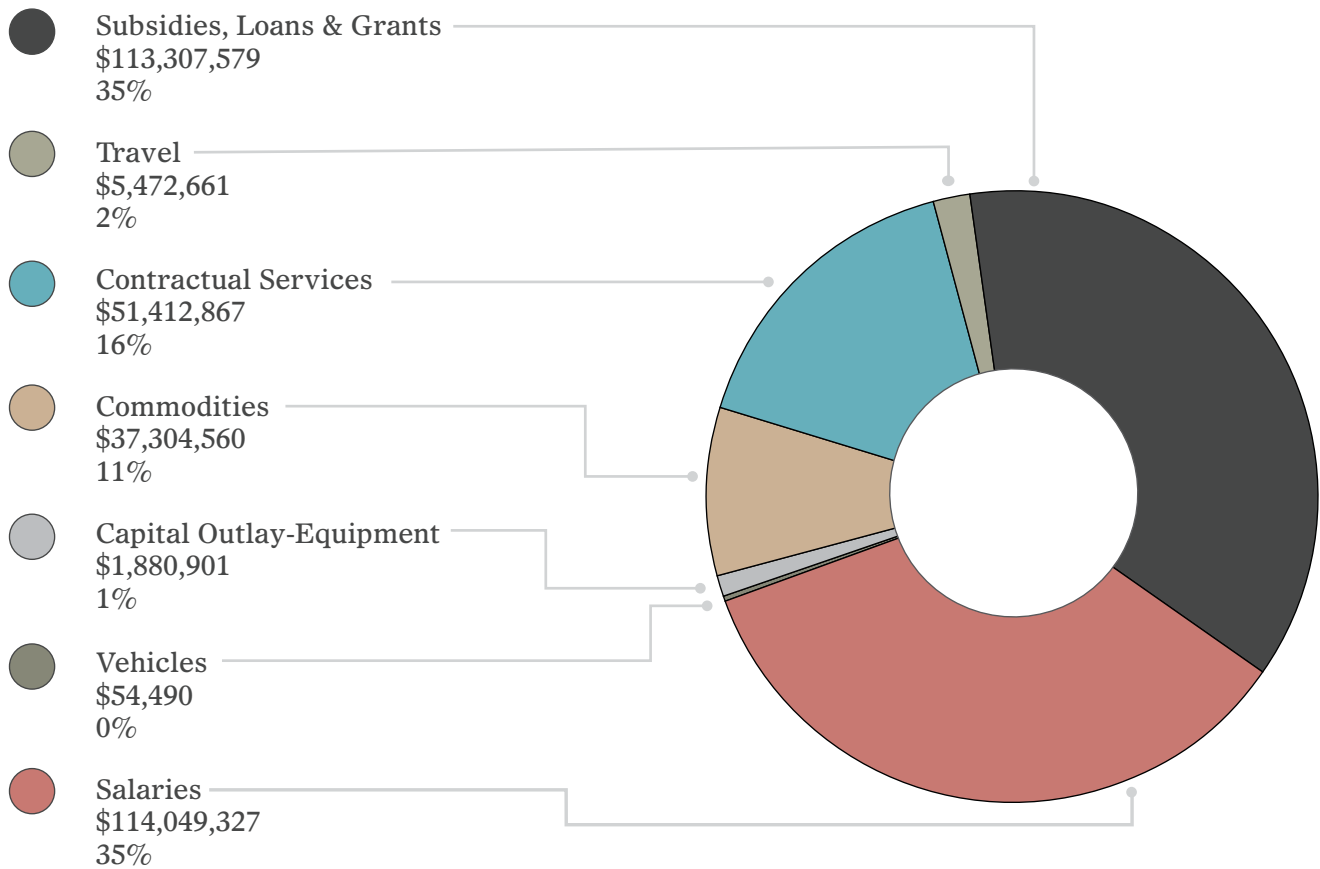
HEALTH CARE EXPENDABLE



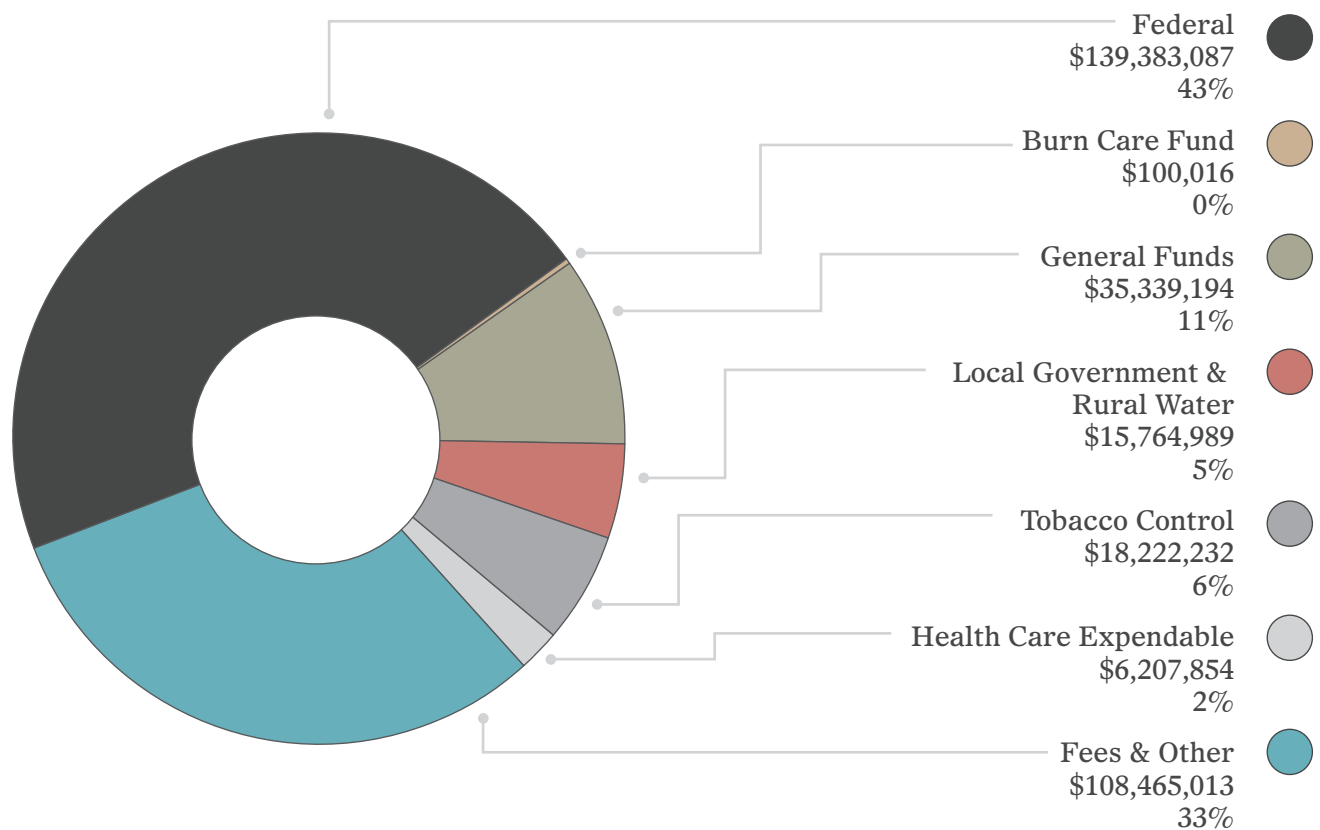
FEES & OTHER



FISCAL YEAR 2014 EXPENDITURES BY MAJOR CATEGORY



FUNDING SOURCES FOR FISCAL YEAR 2014 EXPENDITURES



EXPENDITURE FUNDING SOURCES FOR FISCAL YEARS 2010–2014

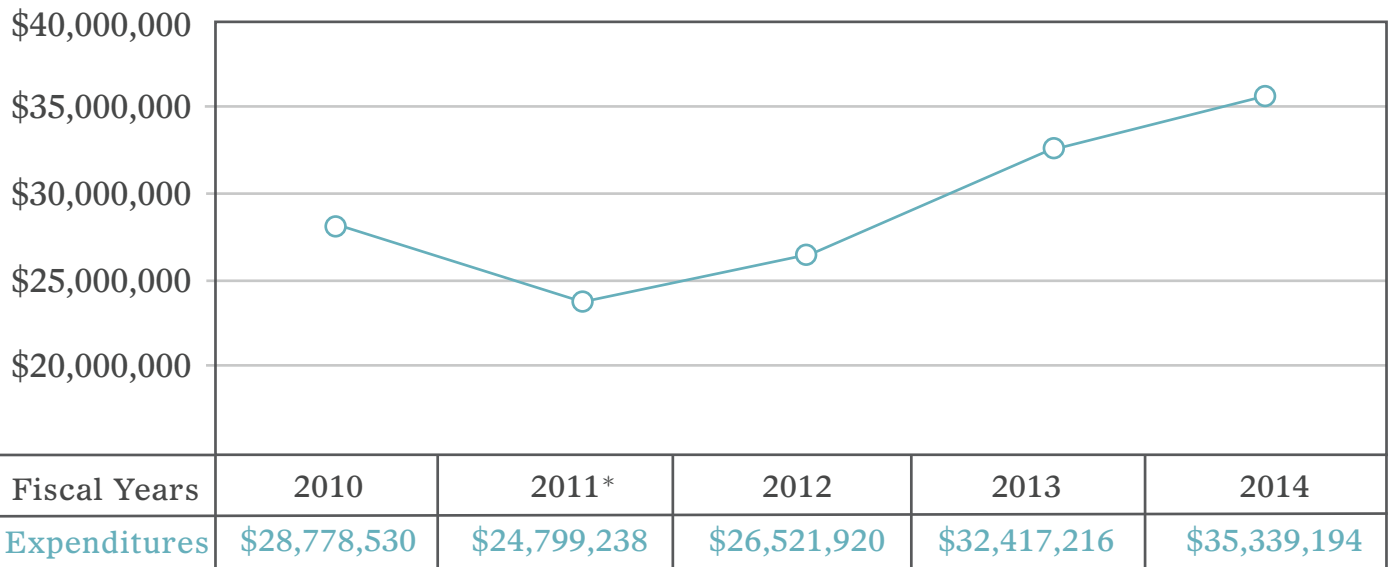
	2010	2011	2012	2013	2014
General Funds ¹	\$ 28,778,530	\$ 24,799,238	\$ 26,521,920	\$ 32,417,216	\$ 35,339,194
Federal	167,058,771	169,143,197	149,866,741	145,563,672	139,383,087
Fees and Other	109,871,007	94,925,415	111,165,211	98,864,195	108,052,348
Health Care Expendable ²	7,158,337	6,578,070	10,282,501	7,158,337	6,207,854
Tobacco Control ³	17,610,643	22,317,838	18,043,151	19,335,990	18,222,232
Local Government & Rural Water	36,088,067	31,713,613	20,716,657	14,882,081	15,764,989
Burn Care	1,088,997	1,159,432	1,892,173	653,016	100,016
Total	\$367,654,352	\$350,636,803	\$338,488,354	\$318,874,507	\$323,482,385

¹ In FY 2011, the general fund amount included \$959,891 in funds transferred by the Legislature to the Division of Medicaid to fund the federal government's extension in increased Federal Medical Assistance Percentage (FMAP) provided for in the American Recovery and Reinvestment Act of 2009.

² In FY 2012 - FY 2014, the Health Care Expendable fund amount includes expenditures for carry-forward funds authorized to be escalated and spent according to the corresponding fiscal year appropriation bill.

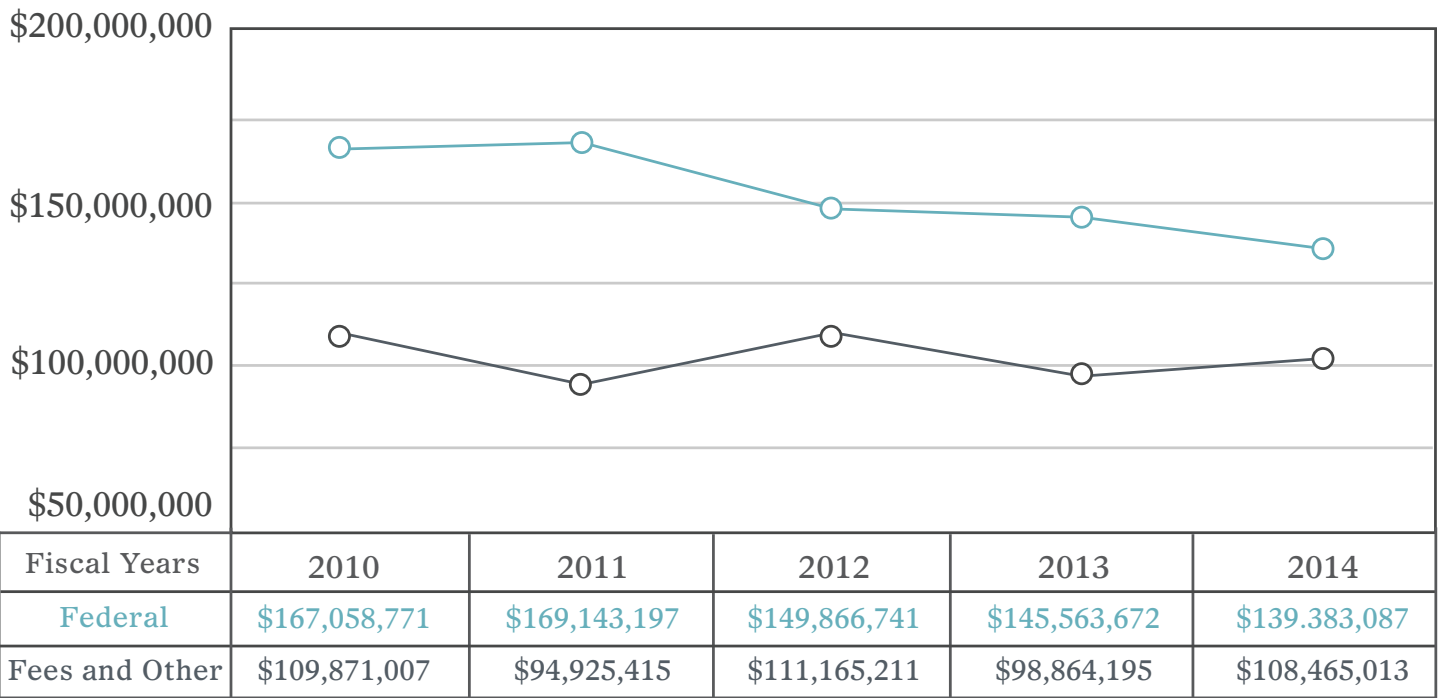
³ In FY 2012 - FY 2014, the Tobacco Control fund amount includes expenditures for carry-forward funds authorized to be escalated and spent according to the corresponding fiscal year appropriation bill.

GENERAL FUND EXPENDITURES



*In FY 2011, the general fund amount included \$959,891 in funds transferred by the Legislature to the Division of Medicaid to fund the federal government's extension in increased Federal Medical Assistance Percentage (FMAP) provided for in the American Recovery and Reinvestment Act of 2009.

SPECIAL FUND EXPENDITURES



EXPENDITURES BY MAJOR CATEGORY FOR FISCAL YEARS 2010–2014

	2010	2011	2012	2013	2014
Salaries	\$115,586,622	\$115,680,331	\$114,399,699	\$116,851,839	\$114,049,327
Travel	6,042,745	5,349,311	5,462,098	5,850,093	5,472,661
Contractual Services	55,959,630	51,517,403	50,403,376	52,433,340	51,412,867
Commodities	30,563,161	29,567,124	28,560,447	28,388,649	37,304,560
Capital Outlay-Equipment	4,213,579	5,677,693	4,781,057	2,824,673	1,880,901
Vehicles	166,827	93,899			54,490
Subsidies, Loans & Grants	155,121,788	142,751,042	134,881,677	112,525,913	113,307,579
Total	\$367,654,352	\$350,636,803	\$338,488,354	\$318,874,507	\$323,482,385

OUT-OF-STATE TRAVEL REPORT

Name	Place	Purpose	Cost	Source
ADCOX-GREEN, ASHLEY	BIRMINGHAM, AL	MS HOMELAND & SECURITY EXERCISE & EVALUA	\$288	Federal
ADCOX-GREEN, ASHLEY	ATLANTA, GA	ANNUAL HAI GRANTEES TRNG WILL CONSIST OF	\$1,556	Federal
ADCOX-GREEN, ASHLEY	ATLANTA, GA	NATL HLTHCARE SAFETY NETWORK HAI'S COURS	\$1,250	Federal
ADCOX-GREEN, ASHLEY	ATLANTA, GA	PHEP SUMMIT 2014 WILL ADDRES CURRENT GAP	\$868	Federal
ADCOX-GREEN, ASHLEY	ANAHEIM, CA	APIC ANNUAL EDUCATIONAL CONF OBTAIN KNOW	\$2,481	Federal
AINSWORTH, REBECCA F	ATLANTA, GA	ELC FOR INFECTIOUS DISEASE GRANTEE MEETI	\$909	Federal
ALBRITTON, ROSALYN C	ARLINGTON, VA	REDUCE TOBACCO USE CONF_PROVIDE TRNG ON	\$2,456	Other
ALDRIDGE, KARA MICHELLE MAGEE	KANSAS CITY, MO	WILL PROVIDE STAFF ENRICHMENT OPPORTUNIT	\$1,693	Federal
ALDRIDGE, KARA MICHELLE MAGEE	CHICAGO, IL	TO IMPROVE SUPPLY OF DISTRIBUTION OF QUA	\$1,342	Federal
ALDRIDGE, KARA MICHELLE MAGEE	WASHINGTON, DC	TO ENGAGE IN HLTHCARE PROFESSIONAL WORKS	\$1,297	Federal
ALDRIDGE, KARA MICHELLE MAGEE	ST LOUIS, MO	NATL RURAL RECRUITMENT & RETENTION NETWO	\$1,200	Federal
ALDRIDGE, KARA MICHELLE MAGEE	DENVER, CO	NATL PRIMARY ORAL HLTH CONF TO ENGAGE IN	\$1,543	Federal
ALDRIDGE, KARA MICHELLE MAGEE	DALLAS, TX	2014 CAREER MD-RESIDENT CAREER FAIR/DALL	\$769	Federal
ALDRIDGE, KARA MICHELLE MAGEE	DESTIN, FL	MS DENTAL ASSOCIATION ANNUAL MEETING-IMP	\$1,970	Federal
ALLEN, PERRY B	SEATTLE, WA	TO DISCUSS CURRENT POLICIES & PRIORITIES O	\$2,106	Federal
ALLEN, PERRY B	ALEXANDRIA, VA	NATL CONF NFPHRHA 2014 FAMILY PLANNING	\$1,264	Federal
ARMSTRONG, MARY GAYLE	BALTIMORE, MD	SURVEY EXECUTIVES TRNG INSTITUTE PROVIDE	\$1,553	Federal
AUSTIN, MICHELLE	FRANKFORT, KY	LTC QUALITY ASSURANCE PERFORMANCE IMPROVE	\$1,397	Federal
AUSTIN, MICHELLE	BALTIMORE, MD	RESIDENT ASSESSMENT INSTRUMENT (RAI) TO	\$1,880	Federal
BAILEY, PATRICIA ANN	ATLANTA, GA	REQUIRE FOR ALL MATERNAL/CHILD HLTH FUND	\$514	Federal
BAILEY, PATRICIA ANN	ATLANTA, GA	CMS HLTH INSURANCE WORKSHOP FOR ANTICIPA	\$434	Federal
BAILEY, PATRICIA ANN	WASHINGTON, DC	ASSN OF MATERNAL & CHILD HLTH PROGRAM CO	\$2,118	Federal
BARRETT, KELLEY ANN	BALTIMORE, MD	TRNG REQUIRED FOR STATE SURVEYORS TO SUR	\$2,954	Federal
BASS, SUZETTE M	RALEIGH, NC	TO CONDUCT ACIFIED FOOD INSPECTIONS & IN	\$967	General
BASS, SUZETTE M	DESTIN, FL	REQUIRED TRNG TO DISCUSS UPDATES ON CURR	\$413	Federal
BASS, SUZETTE M	NEW ORLEANS, LA	FD249 CONDUCTING SEAFOOD INSPECTIONS/REQ	\$1,132	Other
BASS, SUZETTE M	ATLANTA, GA	REGIONAL FOOD CONTAMINATION TABLETOP EXE	\$727	Federal
BASS, SUZETTE M	WEST LAFAYETTE, IN	FD152 FOOD PROCESSING & TECHNOLOGY_GAIN	\$1,502	Federal
BATES, SUSAN A	RALEIGH, NC	TO CONDUCT ACIFIED FOOD INSPECTIONS & IN	\$1,064	General
BATES, SUSAN A	DESTIN, FL	REQUIRED TRNG TO DISCUSS UPDATES ON CURR	\$655	Federal
BATES, SUSAN A	JACKSONVILLE, FL	ER 22U TRACEBACK INVESTIGATIONS TO ASSIST	\$1,941	Federal
BATES, SUSAN A	NEW YORK, NY	FD249 CONDUCTING SEAFOOD INSPECTIONS/REQ	\$1,444	Other
BATES, SUSAN A	WEST LAFAYETTE, IN	FD152 FOOD PROCESSING & TECHNOLOGY_COURS	\$1,690	Other
BATES, SUSAN A	ORLANDO, FL	FD304 LOW ACID CANNED FOOD INSPECTION_LE	\$1,935	Federal
BLACK, DESMONE	ATLANTA, GA	SRF-EPA TRNG WILL COVER NEW PROGRAM REQU	\$718	Other
BLAILOCK, SHARI	MEMPHIS, TN	WILL ENHANCE KNOWLEDGE ON CHALLENGES THA	\$287	Federal
BOLDEN, SUBRINA LYNN	WASHINGTON, DC	PRACTICES TO PROMOTE TOBACCO-FREE ACTIVE	\$1,399	Other
BOLER, JENNIFER HOLLEY	ATLANTA, GA	AMERICAN EVALUATION ASSN SUMMER INSTITUT	\$1,772	Federal
BOOKER, DEGINA REDD	LITTLE ROCK, AR	APHL ANNUAL MEETING & GOVERNMENT ENVIRON	\$548	Federal
BOONE, SUSAN	WASHINGTON, DC	CHANGES & FINANCIAL INFORMATION SESSION	\$2,045	Federal
BOONE, SUSAN	JACKSONVILLE, FL	EHD CONF & NATL CENTER HEARING ASSESSME	\$1,376	Federal
BRANTLEY, CHRISTI C	KANSAS CITY, MO	ASDWA/EPA DATA MANAGEMENT USER CONF_LATE	\$1,558	Federal
BRELAND, TRACI L	DENVER, CO	TO BECOME MORE EDUCATED ON THE ISSUES	\$1,488	Federal
BRELAND, TRACI L	SEATTLE, WA	NAPHSIS MEETING & VSEP DIRECTORS MEETING	\$2,655	Federal
BRITTON, ROMELLE	CHARLESTON, SC	ASSOCIATION OF BOARD CERTIFICATION ANNUA	\$1,226	Federal
BUCKNER, JENNIFER	NEW ORLEANS, LA	GOLD ST&ARD BREAST-FEEDING CONF TO INCREA	(\$281)	Federal
BULLOCK, BRITNEY JORDONNA	NEW ORLEANS, LA	PROVIDE UPDATES ON CURRENT CHALLENGES FA	\$637	Federal
BUNLEY, WARCHETA	NASHVILLE, TN	2014 WORLD TB SYMPOSIUM WILL PROVIDE THE	\$799	General
BURK, KATHY GIBSON	ATLANTA, GA	REQUIRE FOR ALL MATERNAL/CHILD HLTH FUND	\$541	Federal
BURK, KATHY GIBSON	BOSTON, MA	AMERICAN PUBLIC HLTH ASSOCIATION OPPORT	\$2,058	Federal
BURK, KATHY GIBSON	WASHINGTON, DC	AMCHP ANNUAL CONF: THE ROAD AHEAD CHALLE	\$2,220	Federal
BURK, KATHY GIBSON	SAN ANTONIO, TX	W.K.KELLOGG FOUNDATION'S FIRST FOOD FORU	\$1,181	Federal
BURK, KATHY GIBSON	PITTSBURGH, PA	NATL WIC ASSN EDUCATION & NETWORKING CON	\$1,787	Federal
CARSON, JIMMY L	ATLANTA, GA	NATL CONF ON RADIATION CONTROL TRNG ON I	\$1,906	Other
CARTER, LELAA	OKLAHOMA CITY, OK	2014 SPIRIT EBT TASK FORCE MEETING_FACE	\$1,736	Federal
CARTER, LELAA	PITTSBURGH, PA	NATL WIC ASSN EDUCATION & NETWORKING CON	\$1,932	Federal
CHAILLAND, TERRY LYNN	NASHVILLE, TN	2014 WORLD TB SYMPOSIUM WILL PROVIDE THE	\$888	General
CHAMBLEE, TAMMY B	WILMINGTON, NC	TO BETTER PREPARE FOR RECEIVING, DISTRIB	\$1,037	Federal

OUT-OF-STATE TRAVEL REPORT

Name	Place	Purpose	Cost	Source
CHAMBLEE, TAMMY B	NEW ORLEANS, LA	GULF STATE PATIENT MOVEMENT MEETING TO D	\$686	Federal
CHAMBLEE, TAMMY B	ATLANTA, GA	PHEP SUMMIT 2014 WILL ADDRES CURRENT GAP	\$1,177	Federal
CHANEY, JONATHAN MAX	NEW ORLEANS, LA	2013 NATL HLTHCARE COALITION PREPAREDNES	\$768	Federal
CHANEY, JONATHAN MAX	ATLANTA, GA	PHEP SUMMIT 2014 WILL ADDRES CURRENT GAP	\$1,254	Federal
CHANEY, JONATHAN MAX	ORLANDO, FL	PREPAREDNESS, EMERGENCY RESPONSE & RECOV	\$1,102	Federal
CHINTHAKUNTLA, VIJAYA L	DALLAS, TX	2013 HALE CONF/EXCELLENT TRNG OPPORTUNIT	\$649	Federal
CLARK, BRENDA R	DESTIN, FL	REQUIRED TRNG TO DISCUSS UPDATES ON CURR	\$1,073	Other
CLARK, BRENDA R	NASHVILLE, TN	FOOD SAFETY MODERNIZATION ACT & MANUFACT	\$1,256	Federal
CLARK, JENNIFER	NEW ORLEANS, LA	GOLD ST&ARD BREAST-FEEDING CONF TO INCREA	\$873	Federal
COKER, DONALD L, JR	ORLANDO, FL	PREPAREDNESS, EMERGENCY RESPONSE & RECOV	\$947	Federal
COLEMAN, CYNTHIA W	NEW ORLEANS, LA	GOLD ST&ARD BREAST-FEEDING CONF TO INCREA	\$578	Federal
COLLIER, BILLIE F	NASHVILLE, TN	NATL ASSN OF EMS OFFICIALS ANNUAL MEETING	\$1,311	Federal
COLLIER, BILLIE F	SAN ANTONIO, TX	USING YOUR PEDIATRIC READINESS DATA TRNG	\$1,130	Federal
COLLIER, BILLIE F	ORLANDO, FL	NASEMSO MID YEAR MEETING_ TO ADDRESS EME	\$939	Federal
COLLINS, TAWANDA	NEW ORLEANS, LA	GOLD ST&ARD BREAST-FEEDING CONF TO INCREA	(\$300)	Federal
CONLEY, ULYSSES	ATLANTA, GA	SRF-EPA TRNG WILL COVER NEW PROGRAM REQU	\$729	Other
COOPER, MARGARET D	BATON ROUGE, LA	2014 TRI STATE VOAD CONF-TRNG FOR DATABA	\$302	Federal
COOPER, MARGARET D	ATLANTA, GA	PHEP SUMMIT 2014 WILL ADDRES CURRENT GAP	\$996	Federal
COOPER, MARGARET D	MIAMI, FL	INTERMEDIX 2014 SUMMIT - MANY ROLES, ONE	\$232	Federal
COWART, LOGAN A	OAK RIDGE, TN	COURSE TO TRAIN ON THE PROPER USE OF HAR	\$1,315	Other
COWART, LOGAN A	SWEETWATER, TX	LUDLUM MEASUREMENT COURSE TRNG THAT INVO	\$377	Federal
CRAFT, CHRISTY LEIGH	WILMINGTON, NC	TO BETTER PREPARE FOR RECEIVING, DISTRIB	\$1,135	Federal
CRAIG, JAMES H III	SAN ANTONIO, TX	REQUIRED MEETING FOR DIRECTORS OF PH PRE	\$541	Federal
CRAIG, JAMES H III	ATLANTA, GA	RADIATION STUDIES BR&H OF CDC WILL DISCU	\$739	Federal
CRAIG, JAMES H III	NEW ORLEANS, LA	GULF STATE PATIENT MOVEMENT MEETING TO D	\$518	Federal
CRAIG, JAMES H III	ATLANTA, GA	CDC DIVISION OF STATE & LOCAL READINESS	\$743	Federal
CRAIG, JAMES H III	ATLANTA, GA	PHEP SUMMIT 2014 WILL ADDRES CURRENT GAP	\$221	Federal
CRAIG, JAMES H III	BATON ROUGE, LA	RIVERBEND NUCLEAR STATION HOSTILE ACTION	\$278	General
CROSBY, ANGELA GAIL	SAN ANTONIO, TX	INFORM 2013:INTEGRATED FOODBORNE OUTBREA	\$2,060	Federal
CROWDER, ARVIS W JR	DENVER, CO	AIRA 2013 IIS PUBLIC HLTH OPPORTUNITIES	\$2,909	Federal
CURRIER, MARY MARGARET	ORLANDO, FL	ASTHO ANNUAL MEETING & POLICY SUMMIT TO	\$767	General
CURRIER, MARY MARGARET	LITTLE ROCK, AR	ASTHO_REGIONS IV & VI STATE HLTH OFFICIA	\$600	General
DALE, AIMEE	BIRMINGHAM, AL	MS HOMEL& SECURITY EXERCISE & EVALUATION	\$278	Federal
DALE, AIMEE	ATLANTA, GA	PHEP SUMMIT 2014 WILL ADDRES CURRENT GAP	\$1,089	Federal
DANIEL, BETTYE	GATLINBURG, TN	APPALACHIAN DIABETES COALITION TRNG PROJ	\$861	Federal
DANIEL, BETTYE	SAN FRANCISCO, CA	AMERICAN DIABETES ASSN 74TH SCIENTIFIC S	\$3,715	Federal
DENSON, LOUISA ETHELENE	ATLANTA, GA	REQUIRE FOR ALL MATERNAL/CHILD HLTH FUND	\$538	Federal
DENSON, LOUISA ETHELENE	LOS ANGELES, CA	PROVIDE ADVANCED TRNG FOR VICTIM ADVOCATE	\$1,535	Federal
DENSON, LOUISA ETHELENE	WASHINGTON, DC	AMCHP ANNUAL CONF: THE ROAD AHEAD CHALLE	\$1,655	Federal
DISBROW, PEGGY E	DALLAS, TX	2013 HALE CONF/EXCELLENT TRNG OPPORTUNIT	\$757	Federal
DIXON, KATINA J	PITTSBURGH, PA	NATL WIC ASSN EDUCATION & NETWORKING CON	\$1,917	Federal
DIXON, SONTYNA NYKOLE	AUSTIN, TX	NCIT BASIC-CERTIFIED INVESTIGATOR & INSP	\$785	Other
DOBBS, THOMAS E	ATLANTA, GA	NATL TB CONF TRNG NETWORK & PRESENTING P	\$976	General
DOVE, CASSANDRA ANQUALA	NASHVILLE, TN	ANNUAL SOUTHERN OBESITY SUMMIT TO DISCUS	\$1,699	Federal
DOVE, CASSANDRA ANQUALA	ATLANTA, GA	REQUIRED TRNG FOR STATE CHRONIC DISEASE	\$811	Federal
DOVE, CASSANDRA ANQUALA	ORLANDO, FL	ANNUAL STROKE BELT CONSORTIUM/WILL BE A	\$370	Federal
DOVE, CASSANDRA ANQUALA	NEW ORLEANS, LA	SEVENTH HLTH DISPARITIES CONF IMPLEMENTIN	\$523	Federal
DUCKSWORTH, GWENDOLYN D	DALLAS, TX	LEARN ABOUT NEW TECHNOLOGICAL & PROGRAM	\$1,554	Federal
DUCKSWORTH, GWENDOLYN D	ATLANTA, GA	STATE WIC DIRECTORS MEETING REQUIRED FOR	\$1,510	Federal
DURR, ERICA P	ATLANTA, GA	CMS HLTH INSURANCE WORKSHOP FOR ANTICIPA	\$399	Other
EASTERLING, LATASHA RENAE	MIAMI, FL	INTERMEDIX 2014 SUMMIT - MANY ROLES, ONE	\$2,684	Federal
EICHER, DONALD ELLSWORTH III	WASHINGTON, DC	NATL RURAL HLTH ASSN/RURAL HLTH POLICY I	\$1,645	Other
EICHER, DONALD ELLSWORTH III	LAS VEGAS, NV	NATL RURAL HLTH ASSN ANNUAL MEETING_PROV	\$1,653	Federal
ELLIS, JESSE STEPHEN	SAVANNAH, GA	TO DEVELOP COMMON STRATEGIES & PLAN FOR	\$2,042	Federal
ELLIS, JESSE STEPHEN	GAINSVILLE, FL	COMPREHENSIVE CLINICAL TB COURSE WILL PR	\$1,924	Federal
ELLIS, JESSE STEPHEN	ATLANTA, GA	NATL TB CONF TRNG NETWORK & PRESENTING P	\$1,114	Federal
ELLZEY, JUDY	NEW ORLEANS, LA	GOLD ST&ARD BREAST-FEEDING CONF TO INCREA	\$544	Federal

OUT-OF-STATE TRAVEL REPORT

Name	Place	Purpose	Cost	Source
EL-SADEK, LAMEES	ATLANTA, GA	AMERICAN EVALUATION ASSN SUMMER INSTITUT	\$1,858	Federal
EVANS, VALENCIA	NEW ORLEANS, LA	US CONF ON AIDS LATEST INFORMATION & LEA	\$1,270	General
FAGAN, ROBERT EMMETT JR	NEW ORLEANS, LA	HEARING US COURT_OR APPEALS A BROWN VS M	\$466	Federal
FAIR, FRANCES H	ATLANTA, GA	CMS STATE SURVEY AGENCY DIRECTORS' MEETIN	\$461	Federal
FAIR, FRANCES H	BALTIMORE, MD	SURVEY EXECUTIVES TRNG INSTITUTE PROVIDE	\$1,384	Federal
FERRILL, WENDY R	BIRMINGHAM, AL	2013 PROFESSIONAL DEVELOPMENT OF SEMINAR	\$889	Federal
FORTENBERRY, DEBORAH E	BALTIMORE, MD	NEW QUALITY CONTROL LABORATORY REGULATIO	\$2,128	Federal
FORTENBERRY, DEBORAH E	AUSTIN, TX	ANNUAL MEETING OF THE CLIA SOUTHERN CONS	\$1,367	Federal
FOX, ANTHONY EARL	WASHINGTON, DC	APPALACHIAN REG COMMISSION'S DIABETES CO	\$325	Federal
FUNCHESS, TANYA TOMEKIO	WASHINGTON, DC	PLACE MATTERS EXPLORING THE INTERSECTION	\$1,077	General
FUNCHESS, TANYA TOMEKIO	NASHVILLE, TN	SOUTHERN OBESITY CONF/ TO PREVENT & CONT	\$682	General
FUNCHESS, TANYA TOMEKIO	HOUSTON, TX	IMIA INTERNATL MEDICAL INTERPRETERS CONF	\$1,522	General
FUNCHESS, TANYA TOMEKIO	ST. LOUIS, MO	COMMUNITY BASE RESEARCH PROGRAM WASHINGT	\$1,359	General
FUNCHESS, TANYA TOMEKIO	DETROIT MICHIGAN	PROMOTE RESEARCH DEVELOPMENT & MENTOR YO	\$161	General
GERMAN, JACQUILYN R	NASHVILLE, TN	ANNUAL SOUTHERN OBESITY SUMMIT TO DISCUS	\$1,094	Federal
GERMAN, JACQUILYN R	NASHVILLE, TN	ANNUAL SOUTHERN OBESITY SUMMIT TO DISCUS	\$0	Federal
GERMAN, JACQUILYN R	PORTLAND, OREGON	MAKING CITIES LIVABLE CONF TO REDUCE CHRO	\$1,088	Federal
GERVIN, MARY LAWRENCE	NEW ORLEANS, LA	LEARN REGULATORY ISSUES REQUIREMENTS FOR	\$220	Other
GERVIN, MARY LAWRENCE	ASHEVILLE, NC	REQUIRED CMS DIRECTORS' MEETING THAT WIL	\$1,187	Federal
GERVIN, MARY LAWRENCE	ATLANTA, GA	STATE AGENCY CMS DIRECTOR'S MEETING: CMS	\$461	Federal
GERVIN, MARY LAWRENCE	BALTIMORE, MD	SURVEY EXECUTIVES TRNG INSTITUTE PROVIDE	\$1,377	Federal
GERVIN, MARY LAWRENCE	LOUISVILLE, KY	STATE AGENCY DIRECTOR'S MEETING REQUIRED	\$380	Federal
GONG, HARRY D JR	DESTIN, FL	DRINKING WATER SRF PROGRAM WILL BE AN EX	\$874	Other
GONG, HARRY D JR	POINT CLEAR, AL	AL/MS AWWA CONF PLANNING MEETING TO DISC	\$191	Other
GONG, HARRY D JR	POINT CLEAR, AL	2014 AL/MS AWWA CONFERENCE PLANNING MEET	\$223	Federal
GONG, HARRY D JR	DALLAS, TEXAS	WORK ON FINAL DESIGN OF 2015 DRINKING WA	\$1,081	Other
GRAHAM, JUANITA CAROL	BATON ROUGE, LA	LOUISIANA BIRTH OUTCOMES ACTIVITIES THAT	\$408	Federal
GRAHAM, JUANITA CAROL	NEW ORLEANS, LA	TRNG TO CERTIFY NEW USERS OF THE NIOCCS	\$855	Federal
GRAHAM, JUANITA CAROL	BOSTON, MA	AMERICAN PUBLIC HLTH ASSOCIATION OPPORT	\$2,057	Federal
GRANTHAM-VILLASENOR, ALISHA MARIE	NEW ORLEANS, LA	GOLD ST&ARD BREAST-FEEDING CONF TO INCREA	\$581	Federal
GREEN, CANDICE E	NEW ORLEANS, LA	XAVIER UNIVERSITY OF LOUISIANA COLLEGE OF	\$875	General
GREEN, CANDICE E	ST. LOUIS, MO	COMMUNITY BASE RESEARCH PROGRAM WASHINGT	\$1,315	General
GREY, AMY ELIZABETH	ATLANTA, GA	PHEP SUMMIT 2014 WILL ADDRES CURRENT GAP	\$867	Federal
GREY, AMY ELIZABETH	ATLANTA, GA	NATL PUBLIC HLTH INFORMATION COALITION C	\$135	Federal
GRIGGS, ALICE MARIE	ATLANTA, GA	TRI REGIONAL FAITH & COMMUNITY HLTH SUMM	\$1,067	Federal
GULLICK, JENNIFER	NEW ORLEANS, LA	GOLD ST&ARD BREAST-FEEDING CONF TO INCREA	\$314	Federal
GUTHRIE-LEWIS, ELVIE P	NEW ORLEANS, LA	PROVIDE UPDATES ON CURRENT CHALLENGES FA	\$369	Federal
GUTHRIE-LEWIS, ELVIE P	DALLAS, TX	2013 HALE CONF/EXCELLENT TRNG OPPORTUNIT	\$971	Federal
GUTHRIE-LEWIS, ELVIE P	DALLAS, TX	LEARN ABOUT NEW TECHNOLOGICAL & PROGRAM	\$1,373	Federal
GUTHRIE-LEWIS, ELVIE P	HOUSTON, TX	ACADEMY OF NUTRITION & DIETETICS FOOD &	\$1,664	Federal
GUTHRIE-LEWIS, ELVIE P	ALEXANDRIA, VA	SPIRIT USER GROUP EXECUTIVE STEERING COM	\$1,714	Federal
GUTHRIE-LEWIS, ELVIE P	SAN ANTONIO, TX	W.K.KELLOGG FOUNDATION'S FIRST FOOD FORU	\$1,072	Federal
GUTHRIE-LEWIS, ELVIE P	OKLAHOMA CITY, OK	2014 SPIRIT EBT TASK FORCE MEETING_FACE	\$1,713	Federal
GUTHRIE-LEWIS, ELVIE P	ATLANTA, GA	STATE WIC DIRECTORS MEETING REQUIRED FOR	\$1,400	Federal
GUTHRIE-LEWIS, ELVIE P	PITTSBURGH, PA	NATL WIC ASSN EDUCATION & NETWORKING CON	\$1,763	Federal
HAND, SHERYL OWEN	SAN ANTONIO, TX	INFORM 2013: INTEGRATED FOODBORNE OUTBREA	\$1,590	Federal
HANSON, JENNIFER A	ATLANTA, GA	EPIDEMIOLOGY IN ACTION COURSE DESIGNED	\$2,967	Federal
HARPER, LYNNETTE S	ST LOUIS, MO	ANNUAL EDUCATIONAL CONF & TRNG ON COUNCI	\$1,079	Federal
HARPER, LYNNETTE S	SAN DIEGO, CA	HLTHCARE COMPLIANCE ASSOC ANNUAL CONF LE	\$2,798	Federal
HARRIS, DEBRA ANN	ATLANTA, GA	CMS HLTH INSURANCE WORKSHOP FOR ANTICIPA	\$377	Federal
HARRIS, ROZELIA W	CHICAGO, IL	SKILL-BUILDING WORKSHOP FOR STATE RURAL	\$1,752	Federal
HARRIS, ROZELIA W	LEXINGTON, KY	REQUIRED MEETING FOR RURAL HLTH OFFICER/	\$1,247	Federal
HARRIS, ROZELIA W	AUSTIN, TX	NATL RURAL HLTH CLINIC & CRITICAL ACCESS	\$2,102	Federal
HARRIS, ROZELIA W	ASHEVILLE, NC	NATIONA ORGANIZATION OF STATE RURAL HLTH	\$26	Federal
HARRIS, ROZELIA W	WASHINGTON, DC	NATL ASSN OF COMMUNITY HLTH CENTERS POLI	\$1,248	General
HARRIS, ROZELIA W	WASHINGTON, DC	APPALACHIAN REGIONAL COMMISSION HLTH POL	\$1,513	Federal
HARRIS, ROZELIA W	LAS VEGAS, NV	NATL RURAL HLTH ASSN ANNUAL MEETING_PROV	\$1,246	Federal

OUT-OF-STATE TRAVEL REPORT

Name	Place	Purpose	Cost	Source
HARRIS, ROZELIA W	DESTIN, FL	MS DENTAL ASSOCIATION ANNUAL MEETING_IM	\$675	Federal
HART, WALTER R	DESTIN, FL	PROVIDE NETWORKING OPPORTUNITIES WITH HL	\$1,355	Other
HART, WALTER R	ATLANTA, GA	CDC OFFICE OF SMOKING & HLTH REGIONAL ME	\$169	Other
HAUGHTON, LINDA L	ATLANTA, GA	OCCUPATIONAL SAFETY & HLTH NATL TRNG FOR	\$1,635	Other
HAWKINS, JACKIE S	NASHVILLE, TN	SOUTHERN OBESITY CONF/ TO PREVENT & CONT	\$464	Federal
HAWKINS, JACKIE S	PORTLAND, OREGON	MAKING CITIES LIVABLE CONF TO REDUCE CHRO	\$588	Federal
HAXTON, EMILY CORINNE	LAS VEGAS, NV	UPDATES ON WATER LAW-BOTH CLEAN WATER/WA	\$1,647	Federal
HAYES, CINDY LEIGH	LONGMONT, CO	REQUIRED TRNG COURSE FOR STAFF WHO NEED	\$1,588	Federal
HEARN, MEGHAN E	ALBUQUERQUE, NM	NATL COALITION OF STD DIRECTORS MEETING	\$982	Federal
HENRY, KAY G	SANTA FE, NM	PUBLIC HLTH NURSING: SHAPING THE FUTURE	\$1,218	Federal
HILL, DELLA M BROOM	SAN ANTONIO, TX	CMS BASIC LONG TERM CARE TRNG COURSE INC	\$2,178	Federal
HILL, JEREMY G	ATLANTA, GA	MEDICITY CLIENT CONGRESS (SUMMIT 2013) M	\$1,238	Federal
HOLCOMBE, JAMES M	ATLANTA, GA	NATL TB CONF TRNG NETWORK & PRESENTING P	\$1,694	Federal
HOLDINESS, ROY DALE	NASHVILLE, TN	NATL ASSN OF EMS OFFICIALS ANNUAL MEETING	\$1,500	Other
HOLDINESS, ROY DALE	ORLANDO, FL	NAEMSO MID YEAR MEETING TO ADDRESS EMER	\$956	Other
HOLIDAY, WILLIE E	BALTIMORE, MD	NATL ASSN OF FARMERS' MARKET CONF - HOW	\$1,779	Federal
HOLIDAY, WILLIE E	SALT LAKE CITY, UT	ANNUAL COMMODITY SUPPLEMENTAL FOOD PROGR	\$1,482	Federal
HOLSAPPLE, WESLEY FRANKLIN II	NEW ORLEANS, LA	NATL HLTHCARE COALITION PREPAREDNESS CON	\$700	Federal
HOLSAPPLE, WESLEY FRANKLIN II	ATLANTA, GA	PHEP SUMMIT 2014 WILL ADDRES CURRENT GAP	\$993	Federal
HOLSAPPLE, WESLEY FRANKLIN II	POINT CLEAR, AL	MS HOSPITAL ASSN - LEADERSHIP CONF EXHI	\$350	Federal
HOPKINS, JENNIFER A	SEATTLE, WA	TO DISCUSS CURRENT POLICIES & PRIORITIES O	\$1,998	Federal
HOPKINS, JENNIFER A	ALEXANDRIA, VA	NATL CONF NFPHRHA 2014 FAMILY PLANNING	\$1,611	Federal
HORN, APRIL RENEE	NEW ORLEANS, LA	GOLD ST&ARD BREAST-FEEDING CONF TO INCREA	\$517	Federal
HORTON, JO RIPLEY	ANNAPOLIS, MD	COURSE IS DESIGNED TO GIVE THE AGENCY SUR	\$1,460	Federal
HORTON, JO RIPLEY	BALTIMORE, MD	TRNG REQUIRED FOR STATE SURVEYORS TO SUR	\$1,056	Federal
HOWARD, TARCHA CALANDRA	MEMPHIS, TN	FDA COURSE 112 - FOOD CODE_ TO OBTAIN MO	\$53	Federal
HUDSON, BRIEAH DOUGALE	MEMPHIS, TN	WILL ENHANCE KNOWLEDGE ON CHALLENGES THA	\$591	Federal
HUDSON, BRIEAH DOUGALE	DALLAS, TX	2013 HALE CONF/EXCELLENT TRNG OPPORTUNIT	\$709	Federal
HUDSON, BRIEAH DOUGALE	NEW ORLEANS, LA	GOLD ST&ARD BREAST-FEEDING CONF TO INCREA	\$648	Federal
INGERSOLL, WANDA LYNN	EDISON, NJ	DRINKING WATER LABORATORY CERTIFICATION	\$1,653	Other
INGERSOLL, WANDA LYNN	LITTLE ROCK, AR	APHL ANNUAL MEETING & GOVERNMENT ENVIRON	\$539	Other
IRWIN, THERESA ANN	BALTIMORE, MD	NEW QUALITY CONTROL LABORATORY REGULATIO	\$2,095	Federal
IRWIN, THERESA ANN	AUSTIN, TX	ANNUAL MEETING OF THE CLIA SOUTHERN CONS	\$1,417	Federal
JACKSON, ANN H	ATLANTA, GA	NATL TB CONF_ TRNG NETWORK & PRESENTING	\$1,117	Federal
JACKSON, NICOLE G	MEMPHIS, TN	FDA COURSE 112 - FOOD CODE_ TO OBTAIN MO	\$524	General
JACKSON, THERESA C	BALTIMORE, MD	TRNG REQUIRED FOR STATE SURVEYORS TO SUR	\$1,109	Federal
JAMES, KELLI	DES MOINES, IA	QIES BASIC #2 WORKBENCH COMPREHENSIVE TR	\$1,586	Federal
JOHNSON, KENDRA LAKITA	ROCKVILLE, MD	HIV CROSS PARTCARE COLLABORATIVE LEARNIN	\$183	Federal
JOHNSON, KENDRA LAKITA	ATLANTA, GA	STD PREVENTION CONF WILL PROVIDE BEST PR	\$739	Federal
JOHNSON, KINA L	SAN FRANCISCO, CA	WORKING TO INSTITUTIONALIZE SEX EDUCATIO	\$142	Federal
JOHNSON, KINA L	NASHVILLE, TN	ANNUAL SOUTHERN OBESITY SUMMIT TO DISCUS	\$1,165	Federal
JOHNSON, MARILYN	DALLAS, TX	MYERS-BRIGGS TYPE INDICATOR(MBTI) CERTIF	\$1,284	Federal
JOHNSON, NIKKI GIOVANNI	ALBUQUERQUE, NM	OPPORTUNITY TO ACQUIRE THE LATEST INFOR	\$1,557	Federal
JOHNSON, RICHARD A	SEATTLE, WA	NAPHSIS MEETING & VSEP DIRECTORS MEETING	\$2,624	Other
JOHNSON, TIFFANY ONIECE	METAIRIE, LA	POINT OF SALE YOUTH TRNG TO INCREASE KNO	\$149	Federal
JOHNSON, TIFFANY ONIECE	ATLANTA, GA	CDC OFFICE OF SMOKING & HLTH REGIONAL ME	\$169	Federal
JOHNSON, XAVIER KATRICE	NEW ORLEANS, LA	SEVENTH HLTH DISPARITIES CONF IMPLEMENTIN	\$831	Federal
JONES, ALESHIA L	NEW ORLEANS, LA	GOLD ST&ARD BREAST-FEEDING CONF TO INCREA	\$410	Federal
JONES, MICHAEL RANARD	CHICAGO, IL	TO IMPROVE THE SUPPLY OF DISTRIBUTION O	\$1,380	Federal
JONES, SHERELDA DARLENE	INDIANAPOLIS, IN	DENTA QUEST FOUNDATION GRANTEEES MEETING	\$1,570	Federal
JONES, SHERELDA DARLENE	FORT WORTH, TX	NATL ORAL HLTH CONF ATTEND VALUABLE EDU	\$1,212	Federal
JORDAN, MARY L	BIRMINGHAM, AL	COURSE FOR INFANTS,CHILDREN/ADOLESCENTS	\$832	Federal
JORDAN, MARY L	PITTSBURGH, PA	NATL WIC ASSN EDUCATION & NETWORKING CON	\$1,916	Federal
JUSTICE, JOHN DANIEL	ATLANTA, GA	REQUIRE FOR ALL MATERNAL/CHILD HLTH FUND	\$616	Federal
JUSTICE, JOHN DANIEL	WASHINGTON, DC	AMCHP ANNUAL CONF: THE ROAD AHEAD CHALLE	\$1,224	Federal
KENDRICK, CHERIE D	LONGMONT, CO	REQUIRED TRNG COURSE FOR STAFF WHO NEED	\$1,297	Federal
KENDRICK, CHERIE D	DES MOINES, IA	QIES BASIC #2 WORKBENCH COMPREHENSIVE TR	\$1,719	Federal

OUT-OF-STATE TRAVEL REPORT

Name	Place	Purpose	Cost	Source
KING, LOSONDRA S	SAN DIEGO, CA	EBT SYSTEM IMPLEMENTATION MEETING TO LEA	\$1,469	Federal
KING, RONNIE B	ATLANTA, GA	STD PREVENTION CONF WILL PROVIDE BEST PR	\$1,057	Federal
KITTLE, THERESA	ATLANTA, GA	PUBLIC HLTH INFORMATICS CONF_PROVIDE GUI	\$1,372	Federal
KNOTT, JEROME	CHICAGO, IL	SKILL-BUILDING WORKSHOP FOR STATE RURAL	\$1,517	Federal
KNOTT, JEROME	LEXINGTON, KY	REQUIRED MEETING FOR RURAL HLTH OFFICER/	\$1,176	Federal
KNOTT, JEROME	NEW ORLEANS, LA	OFFICE OF RURAL HLTH REGIONAL CRITICAL A	\$522	Federal
KNOTT, JEROME	WASHINGTON, DC	HLTHCARE PROFESSIONAL WORKSHOP TRNG & RE	\$1,328	Federal
KNOTT, JEROME	AUSTIN, TX	NATL RURAL HLTH CLINIC & CRITICAL ACCESS	\$2,011	Federal
KNOTT, JEROME	ASHEVILLE, NC	NATL ORGANIZATION OF STATE OFFICE OF RUR	\$1,406	Federal
KOIVA, ASHLEY W	BIRMINGHAM, AL	2013 PROFESSIONAL DEVELOPMENT OF SEMINAR	\$521	Other
KURMANA, SAI	ATLANTA, GA	CDC STATE ORAL DISEASE PREVENTION PROGRA	\$1,658	Federal
LAKE, DEBORAH A	LOS ANGELES, CA	PROVIDE ADVANCED TRNG FOR VICTIM ADVOCATE	\$1,529	Federal
LAMMONS, KELLY N	ATLANTA, GA	COURSE WILL COVER RANGE OF ORGANISMS ISO	\$1,335	Federal
LAMPTON, KATHRYN DANIELLE	SAVANNAH, GA	TO ASSIST PUBLIC HLTH LEADER DEVELOPS PO	\$3,240	Other
LARMER, MELISSA ANNE	MURFREESBORO, TN	WATER FLUORIDATION, PRINCIPLES & PRACTIC	\$1,057	Other
LARMER, MELISSA ANNE	FORT WORTH, TX	NATL ORAL HLTH CONF__ATTEND VALUABLE ED	\$1,426	Other
LEE, THELMA	BATON ROUGE, LA	SOUTHEAST REGIONAL MILK SEMINAR FDA MILK	\$600	General
LEWERS, DEBRA	WILMINGTON, NC	TO IMPROVE DATA SHARING & DEMONSTRATE ME	\$879	Federal
LIU, XIAOJIAN	WASHINGTON, DC	CHANGES & FINANCIAL INFORMATION SESSION	\$1,410	Federal
LOGAN-HURT, TAWANDA	NEW ORLEANS, LA	GOLD ST&ARD BREAST-FEEDING CONF TO INCREA	\$800	Federal
LOTT, LATONYAA	WASHINGTON, DC	PROFESSIONAL DEVELOPMENT OPPORTUNITY FOR	\$1,807	Federal
LOTT, LATONYAA	ATLANTA, GA	AMERICAN EVALUATION ASSN SUMMER INSTITUT	\$1,828	Federal
LUCKETT, VERONICA J	OKLAHOMA CITY, OK	2014 SPIRIT EBT TASK FORCE MEETING_FACE	\$1,742	Federal
LUCKETT, VERONICA J	PITTSBURGH, PA	NATL WIC ASSN EDUCATION & NETWORKING CON	\$1,929	Federal
LUKE, JOHN T	DESTIN, FL	REQUIRED TRNG TO DISCUSS UPDATES ON CURR	\$474	Other
MABERRY, RANESSA O	FRANKFORT, KY	LTC QUALITY ASSURANCE PERFORMANCE IMPROVE	\$1,387	Federal
MADISON, DWAYNE A	ATLANTA, GA	STATE AGENCY CMS DIRECTOR'S MEETING: CMS	\$454	Federal
MAGEE, CHELSEY R	ATLANTA, GA	BLOOD & URINE METALS ANALYSIS COURSE TRN	\$1,767	Federal
MANNING, TERI D	BALTIMORE, MD	NEW QUALITY CONTROL LABORATORY REGULATIO	\$1,936	Federal
MANNING, TERI D	AUSTIN, TX	ANNUAL MEETING OF THE CLIA SOUTHERN CONS	\$1,389	Federal
MARTIN, JAMES B	METAIRIE, LA	POINT OF SALE YOUTH TRNG TO INCREASE KNO	\$350	Other
MCANALLY, EDWARD R	ATLANTA, GA	REQUIREMENT FOR THE BRFSS GRANT: GRANT A	\$1,601	Federal
MCFARLAND, CARRIE M	KANSAS CITY, MO	DI USERS CONF; TRNG ON DI TRAUMA & DI OU	\$2,257	Other
MCGILVERY, IRMA FAYE	LONGMONT, CO	TRNG FOR MANAGING ENFORCE CASES. CREATI	\$1,276	Federal
MCKNIGHT, PAMELA L	ARLINGTON, VA	PREP TOPICAL TRNG POSITIVE INCORPORATING	\$1,606	Federal
MCKNIGHT, PAMELA L	WASHINGTON, DC	HHS TEEN PREGNANCY PREVENTION GRANTEE CO	\$1,328	Federal
MCLEOD, AMY L	ATLANTA, GA	NATL CAPACITY DEVELOPMENT & OPERATOR WOR	\$722	Federal
MCLEOD, AMY L	POINT CLEAR, AL	AL/MS AWWA CONF PLANNING MEETING TO DISC	\$181	Federal
MCLEOD, AMY L	POINT CLEAR, AL	2014 AL/MS AWWA CONFERENCE PLANNING MEET	\$206	Federal
MEEKS, LAVANDA	FORTWORTH, TX	2014 MANUFACTURED FOOD REGULATORY ALLIAN	\$918	Other
MENDY, VINCENT L	TAHOE CITY, CA	TRNG TO INCORPORATE INTO RESEARCH, TEACH	\$4,287	Federal
MENDY, VINCENT L	NASHVILLE, TN	CSTE ANNUAL CONF_TO PRESENT INFORMATION	\$2,294	Federal
MINNINGER, CHARLES K	EMMITSBURG, MA	ALL HAZARDS SAFETY OFFICER TRAIN/TRAINER	\$141	Federal
MITCHELL, JILLAYNE CHARITY	NEW ORLEANS, LA	EMPOWERMENT CONF- UPDATED INFORMATION ON	\$103	General
MOHAMED, AMEL E	WASHINGTON, DC	PROFESSIONAL DEVELOPMENT OPPORTUNITY FOR	\$758	Federal
MOODY, FRANCES D	SAN FRANCISCO, CA	AMERICAN DIABETES ASSN 74TH SCIENTIFIC S	\$3,424	Federal
MOODY, WILLIAM F	LONG BEACH, CA	ANNUAL SAFE DRINKING WATER ASSN PROVIDE	\$1,690	Other
MOODY, WILLIAM F	MINNEAPOLIS, MN	CIFA WILL PROVIDE INFORMATION REGARDING	\$1,602	Other
MOODY, WILLIAM F	WASHINGTON, DC	ASSN OF STATE DRINKING WATER ADMINISTRAT	\$1,779	Federal
MOODY, WILLIAM F	WASHINGTON, DC	COUNCIL OF INFRASTRUCTURE FINANCING AUTH	\$1,891	Other
MOON, KATHY S	ATLANTA, GA	NPHII GRANTEE MEEETING_REQUIRED MEETING	\$1,372	Other
MORENO, DORA ADRIANA	HOUSTON, TX	IMIA INTERNATL MEDICAL INTERPRETERS CONF	\$1,234	General
MORENO, DORA ADRIANA	SEATTLE, WA	MEDICAL INTERPRETATION TRAIN THE TRAIN C	\$3,275	General
MORROW, YOLANDA DIANA	ARLINGTON, VA	MEETING OF STATE BOARDS TO DISCUSS ISSUE	\$826	Other
MORROW, YOLANDA DIANA	CINCINNATI, OH	NBCOT NATL CONF MEETING TO DISCUSS ISSUE	\$1,173	Federal
MOSCA, NICHOLAS G	FORT WORTH, TX	NATL ORAL HLTH CONF ATTEND VALUABLE EDU	\$1,311	Federal
MOSCA, NICHOLAS G	WASHINGTON, DC	ANNUAL NATL ALLIANCE OF STATE TERRITORIA	\$1,133	Federal
MOSCA, NICHOLAS G	ATLANTA, GA	AAPPS GRANTEE MEETING & 2014 STD PREVENT	\$1,710	Federal

OUT-OF-STATE TRAVEL REPORT

Name	Place	Purpose	Cost	Source
MOSCA, NICHOLAS G	WASHINGTON, DC	WHITE HOUSE OFFICE OF NATL AIDS POLICY F	\$936	Federal
MOULDER, JUDY T	DENVER, CO	TO BECOME MORE EDUCATED ON THE ISSUES	\$1,559	Other
MOULDER, JUDY T	SEATTLE, WA	NAPHSIS MEETING & VSEP DIRECTORS MEETING	\$2,729	Other
NEWKIRK, CAROLINE	BOSTON, MA	AMERICAN PUBLIC HLTH ASSOCIATION OPPORT	\$2,383	Federal
NEWKIRK, JAMES T	ATLANTA, GA	EXPOSURE TO CURRENT THEORY & BEST PRACTI	\$859	Federal
NICHOLS, LUCERSIA	DURHAM, NC	VITEX 2-PC W/OBSERVA TRNG FOR PUBLIC HLT	\$94	General
NIELSEN, DEBBIE	ATLANTA, GA	TO COMPLETE EPI IN ACTION TRNG COURSE	\$2,083	Federal
OAKES, PEGGY JO	ALBUQUERQUE, NM	NATL COALITION OF STD DIRECTORS MEETING	\$916	Federal
ONEAL, ELLEN DALE	AUSTIN, TX	FEDERATION OF REGULATORY BOARDS CONF WIL	\$1,270	Federal
OWENS, DAWN E	BALTIMORE, MD	FOCUSES ON SKILLS USED TO ACUMINATE AD H	\$1,274	Federal
PARISH, DAPHNE	LITTLE ROCK, AR	APHL ANNUAL MEETING & GOVERNMENT ENVIRON	\$555	Other
PARKER, KENYATTA S	DENVER, CO	SHARP TRNG DESIGNED FOR AT RISK-OUT WHO	\$678	Federal
PARKER, KENYATTA S	WASHINGTON, DC	EIGHTH ANNUAL STATE SEX EDUCATION SUMMIT	\$1,376	Federal
PARKER, KENYATTA S	WASHINGTON, DC	HHS TEEN PREGNANCY PREVENTION GRANTEE CO	\$1,526	Federal
PATE, LINDA FAY	ASHEVILLE, NC	REQUIRED CMS DIRECTORS' MEETING THAT WIL	\$1,264	Federal
PATE, LINDA FAY	LONGMONT, CO	REQUIRED CMS TRNG COURSE ON SUPPLIES EXE	\$1,122	Federal
PATE, LINDA FAY	LOUISVILLE, KY	STATE AGENCY DIRECTOR'S MEETING REQUIRED	\$466	Federal
PERRY, VICKIE MAXINE	NEW ORLEANS, LA	LEARN REGULATORY ISSUES REQUIREMENTS FOR	\$861	Federal
PERRY, VICKIE MAXINE	BATON ROUGE, LA	2014 TRI STATE VOAD CONF-TRNG FOR DATABA	\$532	Federal
PEYTON, DAVID B	ALBUQUERQUE, NM	NATL COALITION OF STD DIRECTORS MEETING	\$1,070	Federal
PEYTON, DAVID B	ATLANTA, GA	STD PREVENTION CONF WILL PROVIDE BEST PR	\$968	Federal
PITTS, ANGELA DARLENE	FRANKFORT, KY	LTC QUALITY ASSURANCE PERFORMANCE IMPROVE	\$1,641	Federal
POLK, BERYL DENISE	ASHEVILLE, NC	FOCUS ON THE MEDICAL HOME MODEL & CARE C	\$1,283	Other
POLK, BERYL DENISE	ATLANTA, GA	REQUIRE FOR ALL MATERNAL/CHILD HLTH FUND	\$572	Other
POLK, BERYL DENISE	SAVANNAH, GA	TO ASSIST PUBLIC HLTH LEADER DEVELOPS PO	\$632	Federal
POLK, BERYL DENISE	WASHINGTON, DC	AMCHP ANNUAL CONF: THE ROAD AHEAD CHALLE	\$2,026	Federal
POYNOR, LYNDAL	DALLAS, TX	LEARN ABOUT NEW TECHNOLOGICAL & PROGRAM	\$1,484	Federal
POYNOR, LYNDAL	ATLANTA, GA	STATE WIC DIRECTORS MEETING REQUIRED FOR	\$1,330	Federal
PRATER, WESLEY F	OAKLAND, CA	WOMEN'S HLTH UPDATE 2014 LEARN FROM A WI	\$1,227	Federal
QUILTER, STEPHEN	SAVANNAH, GA	TO DEVELOP COMMON STRATEGIES & PLAN FOR	\$1,433	Federal
REED, MARY ALICE	SEATTLE, WA	TO DISCUSS CURRENT POLICIES & PRIORITIES O	\$2,290	Federal
RICHARDSON, DIONNE J	NEW ORLEANS, LA	AMERICAN DENTAL ASSOCIATION ANNUAL CONF	\$344	Federal
RICHARDSON, DIONNE J	NEW ORLEANS, LA	SEVENTH HLTH DISPARITIES CONF IMPLEMENTIN	\$474	Federal
RICHARDSON, DIONNE J	ATLANTA, GA	CDC STATE ORAL DISEASE PREVENTION PROGRA	\$1,208	Federal
RICHARDSON, DIONNE J	NASHVILLE, TN	ORAL HLTH SUMMIT -COMING TOGETHER TO DEF	\$525	Federal
RICHARDSON, DIONNE J	ST. LOUIS, MO	US NATL ORAL HLTH ALLIANCE MEETING RECOM	\$1,075	Federal
RICHARDSON, DIONNE J	DALLAS/FT.WORTH, TX	NATL ORAL HLTH CONF_FOCUS ON ISSUES & TO	\$1,913	Federal
RIELS, TINA	BIRMINGHAM, AL	MS HOMEL& SECURITY EXERCISE & EVALUATION	\$284	Federal
RIELS, TINA	NEW ORLEANS, LA	GULF STATE PATIENT MOVEMENT MEETING TO D	\$485	Federal
RIELS, TINA	ATLANTA, GA	PHEP SUMMIT 2014 WILL ADDRES CURRENT GAP	\$1,089	Federal
ROBBINS, ANTANIKAH	LONGMONT, CO	REQUIRED TRNG COURSE FOR STAFF WHO NEED	\$1,272	Federal
ROBINSON, JUDY LYNN	BALTIMORE, MD	NATL ASSN OF FARMERS' MARKET CONF - HOW	\$1,635	Federal
ROBINSON, MEAGAN	WASHINGTON, DC	PROFESSIONAL DEVELOPMENT OPPORTUNITY FOR	\$1,827	Federal
ROBINSON, MEAGAN	BOSTON, MA	AMERICAN PUBLIC HLTH ASSOCIATION OPPORT	\$2,088	Federal
ROBINSON, MEAGAN	ATLANTA, GA	AMERICAN EVALUATION ASSN SUMMER INSTITUT	\$1,822	Federal
SANDFORD, BRANDI	WASHINGTON, DC	PRACTICES TO PROMOTE TOBACCO-FREE ACTIVE	\$1,468	Other
SEALE, DANIELLE C	JACKSONVILLE, FL	INFORMATION ON IMPLEMENT HFA CASE MANAGE	\$863	Federal
SEALE, DANIELLE C	RALEIGH, NC	NORTH CAROLINA PUBLIC HLTH CONF_SPEAKER	\$1,118	Federal
SEAWRIGHT, KENNETH C	SAN ANTONIO, TX	REQUIRED MEETING FOR DIRECTORS OF PH PRE	\$811	Federal
SEAWRIGHT, KENNETH C	NEW ORLEANS, LA	GULF STATE PATIENT MOVEMENT MEETING TO D	\$461	Federal
SEAWRIGHT, KENNETH C	ATLANTA, GA	PHEP SUMMIT 2014 WILL ADDRES CURRENT GAP	\$953	Federal
SEVERIN, GLORIA ELIZABETH	ATLANTA, GA	USDA FOOD & NUTRITION SERVICES TRNG	\$410	Federal
SHARLOT, ELIZABETH MELAINE	ATLANTA, GA	PHEP SUMMIT 2014 WILL ADDRES CURRENT GAP	\$867	Federal
SHELBY, MILLICENT LOUISE	POINT CLEAR, AL	MS & LA ONCOLOGY SOCIETY SPRING CONF CAN	\$819	Federal
SHELBY, MILLICENT LOUISE	HOUSTON, TX	DISPARITIES IN HLTH SUMMER WORKSHOP_FOC	\$3,318	Federal
SHELL, PAMELA ANN	CLEARWATER, FL	REQUIRED TRNG COURSE FOR SURVEYOR ON NEW	\$1,836	Federal
SHORT, EUNICE	LITTLE ROCK, AR	SERRC WORKSHOP-APPLYING RESULTS DRIVEN A	\$1,166	Federal
SIMMONS, DAVID	SALT LAKE CITY, UT	ANNUAL COMMODITY SUPPLEMENTAL FOOD PROGR	\$1,440	Federal

OUT-OF-STATE TRAVEL REPORT

Name	Place	Purpose	Cost	Source
SIMMONS, DAVID	METAIRE, LA	EATING WITH EASE-MANAGING COMPLEX FEEDIN	\$84	Federal
SINGLETON, DAVIDA R	WASHINGTON, DC	CDC/CMS LINKING PROJECT IN PERSON TRNG I	\$517	Other
SMITH, DAVID CHASE	ATLANTA, GA	IMPROVING VACCINE STORAGE & H&LING COOPE	\$1,323	Federal
SMITH, JAN P	BALTIMORE, MD	NEW QUALITY CONTROL LABORATORY REGULATIO	\$2,119	Federal
SMITH, JAN P	AUSTIN, TX	ANNUAL MEETING OF THE CLIA SOUTHERN CONS	\$1,444	Federal
SMITH, MILDRED LOUISE	NEW ORLEANS, LA	GULF STATE PATIENT MOVEMENT MEETING TO D	\$495	Federal
SMITH, MILDRED LOUISE	ATLANTA, GA	PHEP SUMMIT 2014 WILL ADDRES CURRENT GAP	\$900	Federal
SMITH, MILDRED LOUISE	RALEIGH/DURHAM, NC	FULL SCALE EVALUATION OF NORTH CAROLINA	\$120	Federal
SMITH, PACIENCE N	ATLANTA, GA	REQUIRED TRNG FOR GRANTEES TO DISCUSS I	\$1,621	Federal
SMITH, PACIENCE N	ATLANTA, GA	MMP NATL DATA MANAGEMENT MEETING ANNUAL	\$1,505	Federal
SMITH, ROGER WILLIAM	ASHEVILLE, NC	REQUIRED CMS DIRECTORS' MEETING THAT WIL	\$1,374	Federal
SMITH, ROGER WILLIAM	ATLANTA, GA	STATE AGENCY CMS DIRECTOR'S MEETING: CMS	\$461	Federal
SMITH, ROGER WILLIAM	NEW ORLEANS, LA	LEARN REGULATORY ISSUES REQUIREMENTS FOR	\$220	Other
SMITH, ROGER WILLIAM	ATLANTA, GA	CMS STATE SURVEY AGENCY DIRECTORS'MEETIN	\$562	Federal
SMITH, ROGER WILLIAM	LOUISVILLE, KY	STATE AGENCY DIRECTOR'S MEETING REQUIRED	\$470	Federal
SRIVASTAVA, KUMUD	SAN DIEGO, CA	DISCUSSING ONGOING SHIFTS IN TB LABORAT	\$1,625	Federal
STALLINGS, NANCY C	MINNEAPOLIS, MN	CIFA WILL PROVIDE INFORMATION REGARDING	\$1,206	Other
STEGALL, MARSHA	NEW ORLEANS, LA	GOLD ST&ARD BREAST-FEEDING CONF TO INCREA	\$327	Federal
STINSON, MONICA L	DESTIN, FL	TO LEARN ADVANCES IN MEDICINE & WAYS TO	\$1,701	Federal
STINSON, MONICA L	BOSTON, MA	AMERICAN PUBLIC HLTH ASSOCIATION OPPORT	\$891	Federal
STRAUGHTER, JEANETTE	JACKSONVILLE, FL	EHDI CONF & NATL CENTER HEARING ASSESSME	\$1,317	Federal
STRONG, CLIFTON	ALEXANDRIA, VA	NATL CONF NFPHRHA 2014 FAMILY PLANNING	\$1,826	Federal
SWAYZE, ELIZABETH S	GATLINBURG, TN	EDUCATIONAL KNOWLEDGE INCREASE ICS & OUT	\$509	Federal
SWAYZE, ELIZABETH S	DESTIN , FL	REQUIRED TRNG TO DISCUSS UPDATES ON CURR	\$435	Other
SWAYZE, ELIZABETH S	NEW YORK, NY	FD249 CONDUCTING SEAFOOD INSPECTIONS/REQ	\$2,798	Other
SWAYZE, ELIZABETH S	FORTWORTH, TX	2014 MANUFACTURED FOOD REGULATORY ALLIAN	\$832	Other
SWAYZE, ELIZABETH S	ORLANDO, FL	CONF FOR FOOD PROTECTION TO IMPROVE & UN	\$1,312	Other
TALBERT, SHELLIE	NEW ORLEANS, LA	GOLD ST&ARD BREAST-FEEDING CONF TO INCREA	\$364	Federal
TAYLOR DIETRICK TERRYCE	GATLINBURG, TN	APPALACHIAN DIABETES COALITION TRNG PROJ	\$649	Federal
TAYLOR, DIETRICH TERRYCE	RALEIGH, NC	SCALABILITY PLANNING FOR DIABETES PRIMARY	\$739	Federal
TAYLOR, DIETRICH TERRYCE	NEW ORLEANS, LA	SEVENTH HLTH DISPARITIES CONF IMPLEMENTIN	\$118	Federal
TAYLOR, DIETRICH TERRYCE	WASHINGTON, DC	APPALACHIAN REG COMMISSION'S DIABETES CO	\$2,946	Federal
TAYLOR, JESSIE ROMA	PICKWICK DAM, TN	CONTROLLED SUBSTANCES THE MEDICAL HOME	\$383	General
TAYLOR, VICKIE VONTERIA	ATLANTA, GA	USDA FOOD & NUTRITION SERVICES TRNG	\$450	Federal
THOMAS, EVA G	WASHINGTON, DC	TO DISCUSS & SHARE PROGRAM MANAGEMENT ST	\$1,146	Federal
THOMAS, LAVETA	BATON ROUGE, LA	2014 TRI STATE VOAD CONF-TRNG FOR DATABA	\$347	Federal
THOMAS, LAVETA	ORLANDO, FL	PREPAREDNESS, EMERGENCY RESPONSE & RECOV	\$1,099	Federal
THOMAS, WILLIAM OSCAR	SARASOTA, FL	MICROSOFT CERTIFIED SUPPORT ASSOCIATE TR	\$282	Federal
THOMPSON, LAKEEFE T	OLATHE, KS	ANNUAL STATE LICENSURE LIAISON GROUP MEET	\$112	Other
THOMPSON, LAKEEFE T	SAN ANTONIO, TX	TO DISCUSS ISSUES AFFECTING THE REGULATI	\$1,643	Other
THOMPSON, LAKEEFE T	AUSTIN, TX	NCIT BASIC-CERTIFIED INVESTIGATOR & INSP	\$795	Other
TIPTON, BRENDA F	ATLANTA, GA	ASSN OF NURSES IN AIDS CARES ANNUAL CONF	\$1,575	General
TOLSDORF, BEATRICE MCCROSKY	AUSTIN, TX	FEDERATION OF REGULATORY BOARDS CONF WIL	\$1,281	Federal
TOLSDORF, BEATRICE MCCROSKY	NEW ORLEANS, LA	5TH CIRCUIT HEARING-OPEN/END DATE FOR LE	\$439	Federal
TUCKER, VICKIE ANN	PHOENIX, AZ	TRNG & UPDATED ON HOW TO STRENGTHEN CURR	\$961	Other
TUCKER, VICKIE ANN	BALTMORE, MD	SOPHE 65TH ANNUAL MEETING_EXCHANGE OF HE	\$1,510	Other
TUREAUD, DEGARETT Q	WASHINGTON, DC	PROMISING PRACTICES TO PROMOTE TOBACCO F	\$1,066	Federal
TURNIPSEED, CHRISTOPHER DAVID	ATLANTA, GA	SRF-EPA TRNG WILL COVER NEW PROGRAM REQU	\$667	Other
UMB BANK NA	SEATTLE, WA	NAPHSIS MEETING & VSEP DIRECTORS MEETING	\$3,600	Other
VARDAMAN, JERRY WAYNE	NEW ORLEANS, LA	NATL MINORITY AIDS COUNCIL TO ENHANCE TH	\$55	Federal
VARDAMAN, JERRY WAYNE	MEMPHIS, TN	SAVING OURSELVES SYMPOSIUM -TOPICS COVER	\$464	Federal
VARNADO, WENDY CAROL	SEATTLE, WA	AMERICAN MOSQUITO CONTROL ASSN ANNUAL ME	\$1,990	Federal
VAUGHN, RICHARD WAYNE	SAN ANTONIO, TX	REQUIRED MEETING FOR DIRECTORS OF PH PRE	\$820	Federal
VAUGHN, RICHARD WAYNE	NASHVILLE, TN	NATL EXERCISE PLANNING MEETING FOR STATE	\$1,704	Federal
VAUGHN, RICHARD WAYNE	EMMITTSBURG, MD	PLANNING SECTION CHIEF TRAIN-THE-TRAINER	\$526	Federal
VAUGHN, RICHARD WAYNE	EMMITTSBURG, MD	NIMS ICS ALL HAZARDS INCIDENT COMM&ER TR	\$590	Federal
VAUGHN, RICHARD WAYNE	EMMITTSBURG, MD	NIMS ICS OPERATIONS SECTION CHIEF TRNG P	\$598	Federal

OUT-OF-STATE TRAVEL REPORT

Name	Place	Purpose	Cost	Source
VAUGHN, RICHARD WAYNE	LEXINGTON, KY	CAPSTONE 14 RESOURCE ALLOCATION WORKSHOP	\$1,252	Federal
VAUGHN, RICHARD WAYNE	ATLANTA, GA	PHEP SUMMIT 2014 WILL ADDRES CURRENT GAP	\$1,089	Federal
WALKER, EVELYN RICKS	DESTIN, FL	PROVIDE NETWORKING OPPORTUNITIES WITH HL	\$2,290	Federal
WALKER, EVELYN RICKS	NASHVILLE, TN	ANNUAL SOUTHERN OBESITY SUMMIT TO DISCUS	\$1,447	Federal
WALKER, VICTORIA	BALTIMORE, MD	UNITY CONF COMMUNITY HLTH WORKERS_STRATE	\$2,096	General
WALLS, TAMEKA L	NEW ORLEANS, LA	SEVENTH HLTH DISPARITIES CONF IMPLEMENTIN	\$401	Federal
WALLS, TAMEKA L	SEATTLE, WA	ANNUAL SOCIETY FOR EPIDEMIOLOGIC RESEARC	\$3,541	Federal
WALTERS, AARON L	ATLANTA, GA	REGIONAL FOOD CONTAMINATION TABLETOP EXE	\$601	Federal
WALTERS, AARON L	SEATTLE, WA	FD 249 CONDUCTING SEAFOOD INSPECTIONS RE	\$1,722	Federal
WALTERS, AARON L	WEST LAFAYETTE, IN	FD152 FOOD PROCESSING & TECHNOLOGY_GAIN	\$1,621	Federal
WALTERS, AARON L	DALLAS, TX	REGIONAL ER324 EPI-READY FOR RESPONSE TE	\$1,147	Federal
WASHINGTON, DASHUNDA RASHELLE	DALLAS/FT.WORTH, TX	NATL ORAL HLTH CONF_FOCUS ON ISSUES & TO	\$2,022	Other
WASHINGTON, SERENA F	EMMITSBURG, MD	TRNG OVERVIEW OF MONITORING & REPORTING	\$1,839	Federal
WATSON, LATASHA CASANDRA	NEW ORLEANS, LA	NATL MINORITY AIDS COUNCIL TO ENHANCE TH	\$334	Federal
WATSON, LATASHA CASANDRA	FORT LAUDERDALE, FL	NATL MINORITY AIDS COUNCIL_TRNG & INDIVI	\$769	Federal
WATSON, LATASHA CASANDRA	MEMPHIS, TN	SAVING OURSELVES SYMPOSIUM -TOPICS COVER	\$429	Federal
WELLS, JACQUELYN E	SAN DIEGO, CA	EBT SYSTEM IMPLEMENTATION MEETING TO LEA	\$1,717	Federal
WEN, CHANGHONG	JACKSONVILLE, FL	EHDI CONF & NATL CENTER HEARING ASSESSME	\$1,470	Federal
WESLEY, MARY MELISSA	BOSTON, MA	AMERICAN PUBLIC HLTH ASSOCIATION OPPORT	\$1,662	Federal
WILLIAMS, ALISA DIANE	BLOOMINGTON, MN	EXCHANGE IDEAS ANF GORGE THE FUTURE IN E	\$2,828	Federal
WILLIAMS, ALISA DIANE	NASHVILLE, TN	NATL ASSN OF EMS OFFICALS ANNUAL MEETING	\$1,518	Other
WILLIAMS, ALISA DIANE	ORLANDO, FL	NASEMSO MID YEAR MEETING_TO ADDRESS EME	\$1,056	Federal
WILLIAMS, ANTONIO TWANE	WASHINGTON, DC	GAY MEN'S HLTH EQUITY WORK GROUP MEETING	\$266	Federal
WILLIAMS, EUREKA L	SEATTLE, WA	TO DISCUSS CURRENT POLICIES & PRIORITIES O	\$2,116	Federal
WINBORNE, LUCY M	ASHEVILLE, NC	REQUIRED CMS DIRECTORS' MEETING THAT WIL	\$1,206	Federal
WINBORNE, LUCY M	ATLANTA, GA	STATE AGENCY CMS DIRECTOR'S MEETING: CMS	\$461	Federal
WINBORNE, LUCY M	FRANKFORT, KY	LTC QUALITY ASSURANCE PERFORMANCE IMPROV	\$2,998	Federal
WINBORNE, LUCY M	BALTIMORE, MD	SURVEY EXECUTIVES TRNG INSTITUTE PROVIDE	\$1,467	Federal
WINBORNE, LUCY M	LOUISVILLE, KY	STATE AGENCY DIRECTOR'S MEETING REQUIRED	\$446	Federal
WINSTEAD, ROBIN MARIE	CLEARWATER, FL	REQUIRED TRNG COURSE FOR SURVEYOR ON NEW	\$1,734	Federal
WINTER, AMY W	MISSIOULA, MT	TO LEARN ABOUT STRATEGIES TO REDUCE THE	\$1,635	Federal
WINTER, AMY W	METAIRIE, LA	POINT OF SALE YOUTH TRNG TO INCREASE KNO	\$141	Federal
WINTER, AMY W	ATLANTA, GA	CDC OFFICE OF SMOKING & HLTH REGIONAL ME	\$169	Federal
YAMAT, ROHANA	POINT CLEAR, AL	AL/MS AWWA CONF PLANNING MEETING TO DISC	\$191	Federal
YAMAT, ROHANA	POINT CLEAR, AL	2014 AL/MS AWWA CONFERENECE PLANNING MEET	\$223	Federal
YOUNG, ARTIS MARIE	WASHINGTON, DC	ADDRESS 340B PROGRAM DEVELOPMENT & CHALL	\$2,087	Federal
YOUNG, ARTIS MARIE	WASHINGTON, DC	TO DISCUSS & SHARE PROGRAM MANAGEMENT ST	\$1,208	Federal
YOUNGBLOOD, DELLA LENE	SPRINGFIELD, IL	TRNG FOR RADON COORDINATOR FOR THE STATE	\$1,425	Other
YOUNGBLOOD, DELLA LENE	DESTIN, FL	2014 RADON CONTINUING EDUCATIONL CONF_RE	\$1,227	Other
ZHANG, LEI	TAMPA, FL	SOUTHERN ANNUAL CONF WILL HELP EDUCATE M	\$23	Federal
ZHANG, LEI	BOSTON, MA	AMERICAN PUBLIC HLTH ASSOCIATION OPPORT	\$1,798	Federal
Total Out of State Travel Cost			\$525,845	

VEHICLE MILEAGE REPORT

ASSET	DESCRIPTION	VIN	MAKE	MODEL	MILES	ODOMETER
301-0043525	1995 BRONCO UTILITY 4X4	1FMEU15H2SLB05697	FORD	BRONCO	8,240	156,554
301-0054790	2000 DRW SUPER DUTY MOTORIZED	1FCNF53S3Y0A14663	FORD	DRW SUPER DUTY	4,837	67,724
301-0057359	2000 DRW SUPER DUTY MOTORIZED	1FCNF53S5Y0A14275	FORD	DRW SUPER DUTY	1,346	18,850
301-0059097	2004 C2500 WAGON 4 DOOR	3GNGC26G34G141756	CHEV	C2500	4,838	48,377
301-0060381	2004 ECONOLINE VAN CARGO VAN	1FTRE14W24HB13128	FORD	ECONOLINE VAN	11,456	114,559
301-0060516	2004 RAM TRUCK CREW PICKUP 4X4	3D7MU48C44G233429	DODG	RAM TRUCK	11,501	115,009
301-0060555	2004 SIERRA PICKUP	1GTEC14V94Z335123	GMC	SIERRA	2,178	21,778
301-0062607	2005 CROWN VICTORIA SEDAN 4 DOOR	2FAFP74W85X167511	FORD	CROWN VICTORIA	5,923	53,309
301-0062749	2005 CARAVAN SPORT VAN FRONT	1D4GP24R15B428091	DODG	CARAVAN	16,374	147,366
301-0062907	2006 ECONOLINE VAN CARGO VAN	1FTNE24W96HA35857	FORD	ECONOLINE VAN	8,353	66,820
301-0062908	2006 ECONOLINE VAN CARGO VAN	1FTNE24W76HA35856	FORD	ECONOLINE VAN	5,860	46,878
301-0063889	2006 RAM TRUCK CREW PICKUP 4X4	1D7KS28C06J162815	DODG	RAM TRUCK	9,055	72,438
301-0064573	2006 TITAN CREW PICKUP 4X4	1N6BA07BX6N507090	NISS	TITAN	16,619	132,955
301-0064574	2006 TITAN CLUB CAB PICKUP 4X4	1N6BA06B76N504746	NISS	TITAN	23,735	189,879
301-0064575	2006 TITAN CLUB CAB PICKUP 4X4	1N6BA06B96N505283	NISS	TITAN	21,692	173,534
301-0064576	2004 TITAN CREW PICKUP	1N6AA07A94N547533	NISS	TITAN	18,068	180,682
301-0064577	2004 TITAN CREW PICKUP 4X4	1N6AA07B04N583071	NISS	TITAN	17,808	178,076
301-0064578	2006 TITAN CLUB CAB PICKUP 4X4	1N6BA06B86N504741	NISS	TITAN	18,903	151,221
301-0064579	2006 TITAN CREW PICKUP 4X4	1N6BA07B06N508605	NISS	TITAN	16,813	134,506
301-0064580	2004 TITAN CREW PICKUP	1N6AA07A84N561486	NISS	TITAN	17,016	170,158
301-0064605	2006 TITAN CLUB CAB PICKUP 4X4	1N6BA06B56N506883	NISS	TITAN	24,528	196,227
301-0065241	2007 EXPEDITION WAGON 4 DOOR 4X4	1FMFK16547LA69551	FORD	EXPEDITION	6,529	45,700
301-0070878	2010 DRW SUPER DUTY CREW CHASSIS	1FDAW5HR3AEA82602	FORD	DRW SUPER DUTY	4,956	19,823
301-0071221	2010 CARAVAN SPORT VAN FRONT	2D4RN4DE0AR390369	DODG	CARAVAN	17,334	69,336
301-0071222	2010 CARAVAN SPORT VAN FRONT	2D4RN4DE7AR390367	DODG	CARAVAN	22,724	90,895
301-0071223	2010 CARAVAN SPORT VAN FRONT	2D4RN4DE1AR390364	DODG	CARAVAN	23,436	93,744
301-0071224	2010 CARAVAN SPORT VAN FRONT	2D4RN4DE5AR390366	DODG	CARAVAN	19,377	77,509
301-0071306	2010 CARAVAN SPORT VAN FRONT	2D4RN4DE3AR390365	DODG	CARAVAN	20,063	80,250
301-0071418	2010 FORD LGT CONVTNL 'F'	1FTEX1EW0AFD19417	FORD	LGT CONVTNL 'F'	9,204	36,815
301-0071835	2011 FORD ECONOLINE VAN	1FTNE1EW5BDA12540	FORD	ECONOLINE VAN	21,186	63,557
301-0072414	2011 FORD FUSION	3FAHP0GA2BR298623	FORD	FUSION	10,785	32,356
301-0072415	2011 FORD FUSION	3FAHP0GA4BR298624	FORD	FUSION	2,627	7,882
301-0073131	2011 FORD FUSION	3FAHP0GA2BR331426	FORD	FUSION	13,970	55,879
301-0073132	2011 FORD FUSION	3FAHP0GA4BR33788	FORD	FUSION	2,474	9,895
301-0076687	2014 DODGE TRUCK	2C4RDGBG4ER186489	DODG	CARAVAN	9,573	9,573
301-0076759	2014 CHEVROLET TRUCK	1GCSGAFXDE1146348	CHEV	EXPRESS	4,299	4,299
301-0076797	2014 JEEP PATRIOT	1C4NJPBA6ED708190	JEEP	PATRIOT	4,485	4,485

TOTAL VEHICLES: 37



MISSISSIPPI STATE DEPARTMENT OF HEALTH
